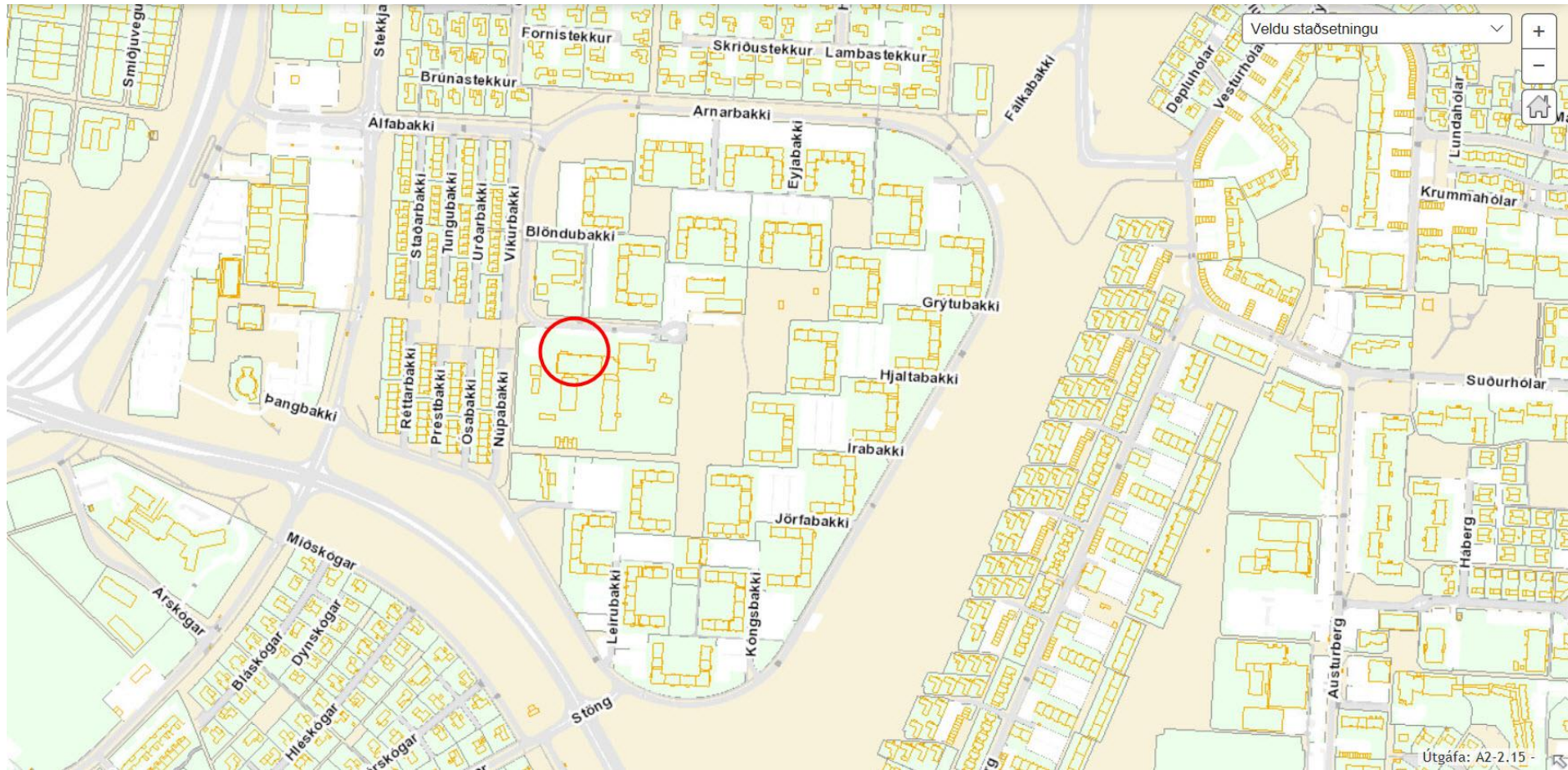
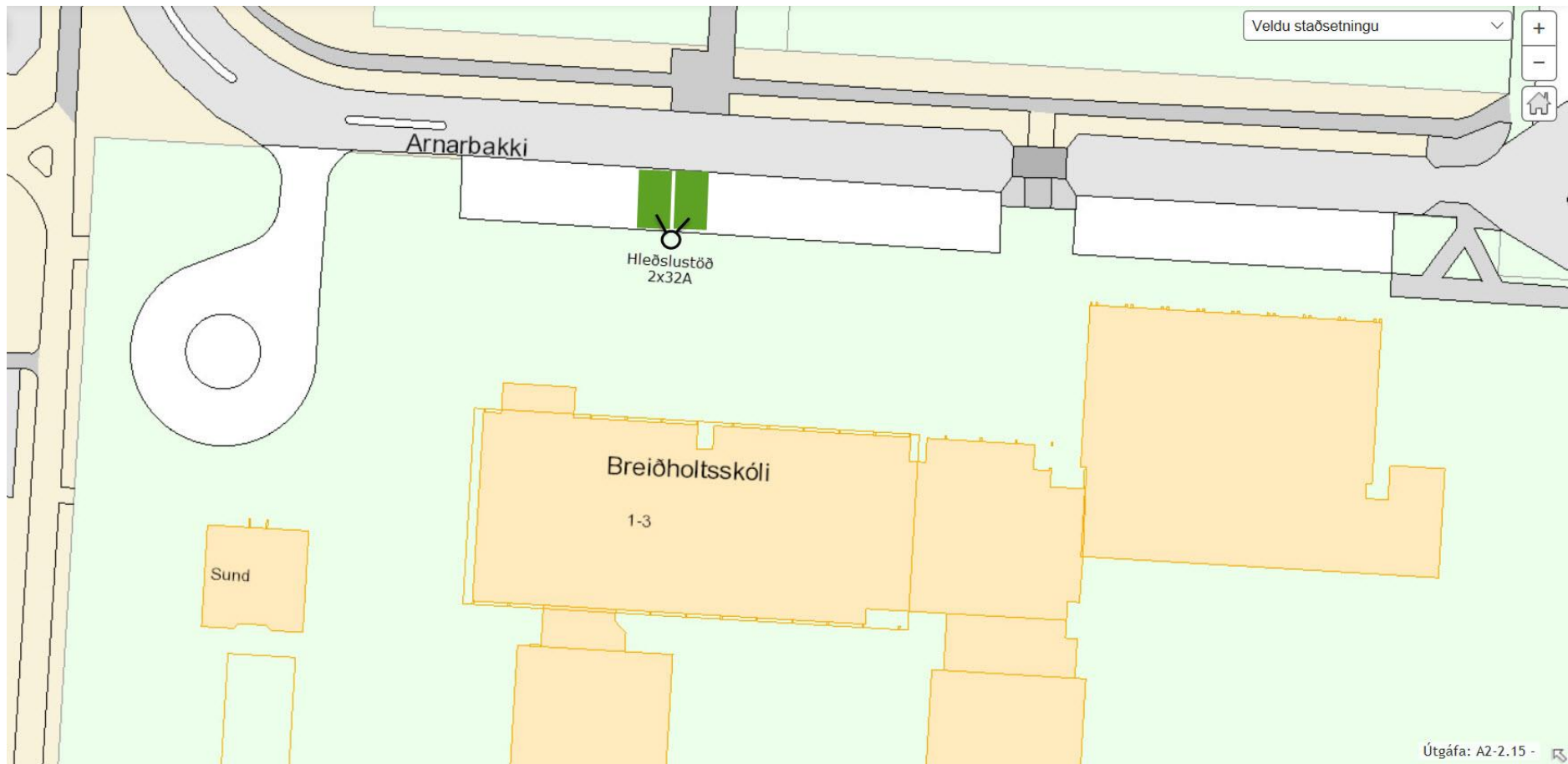


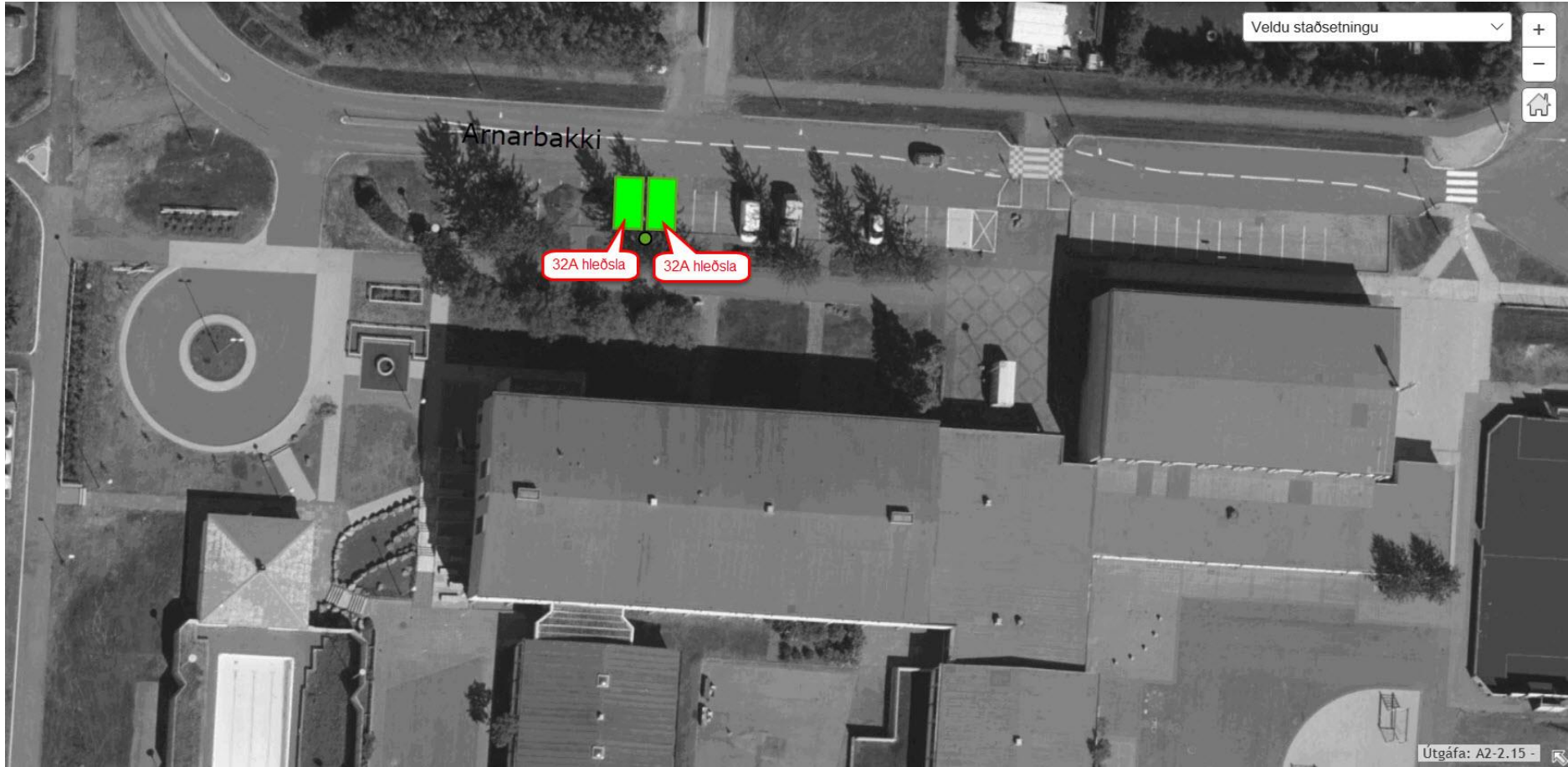
Hleðslustöðvar í tilraunaverkefni OR og Rvk

Umhverfis- og skipulagssvið
Landupplýsingar





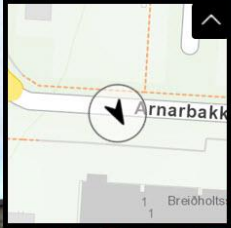




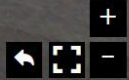


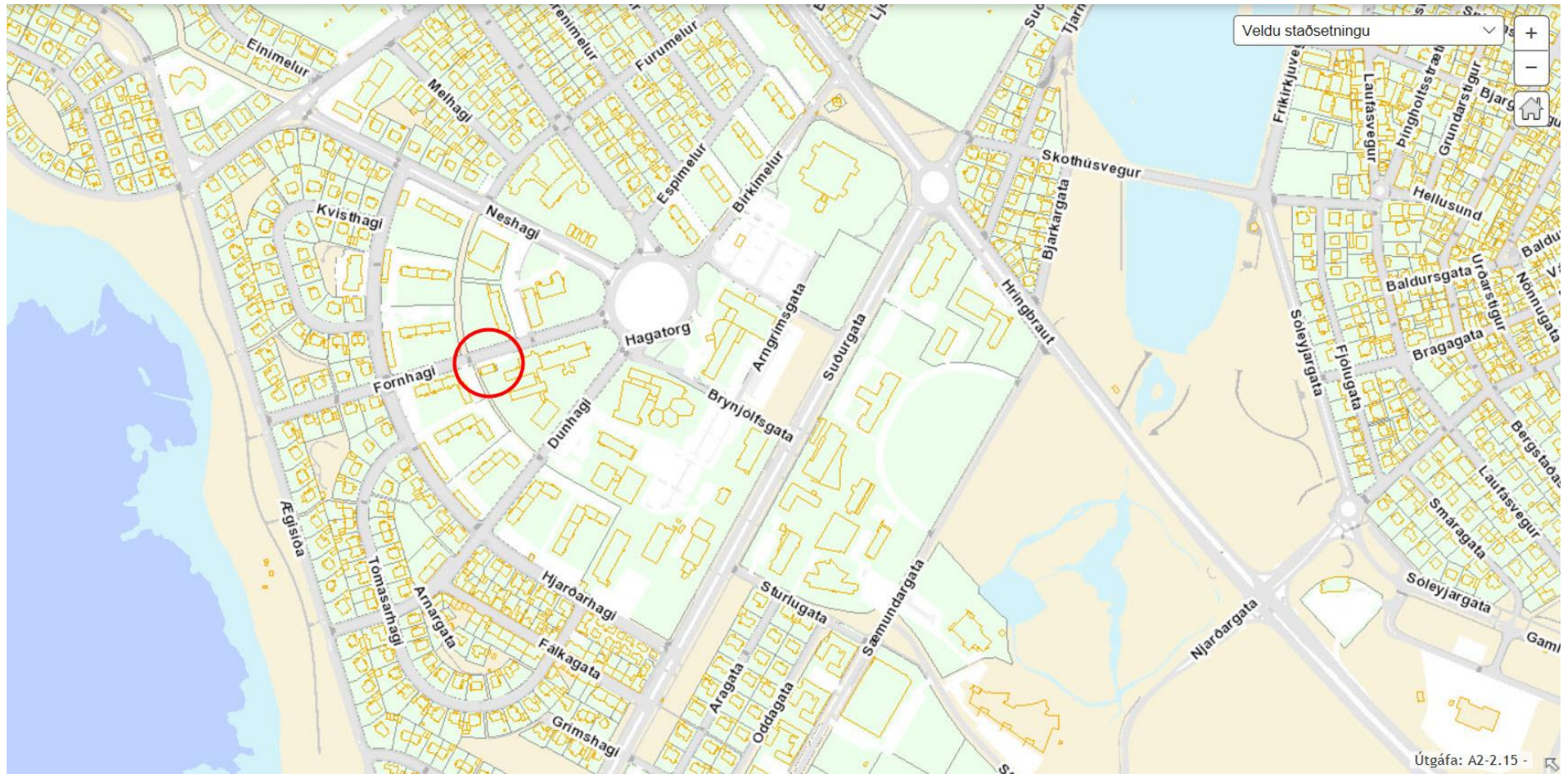
Flakk Senda ábendingu

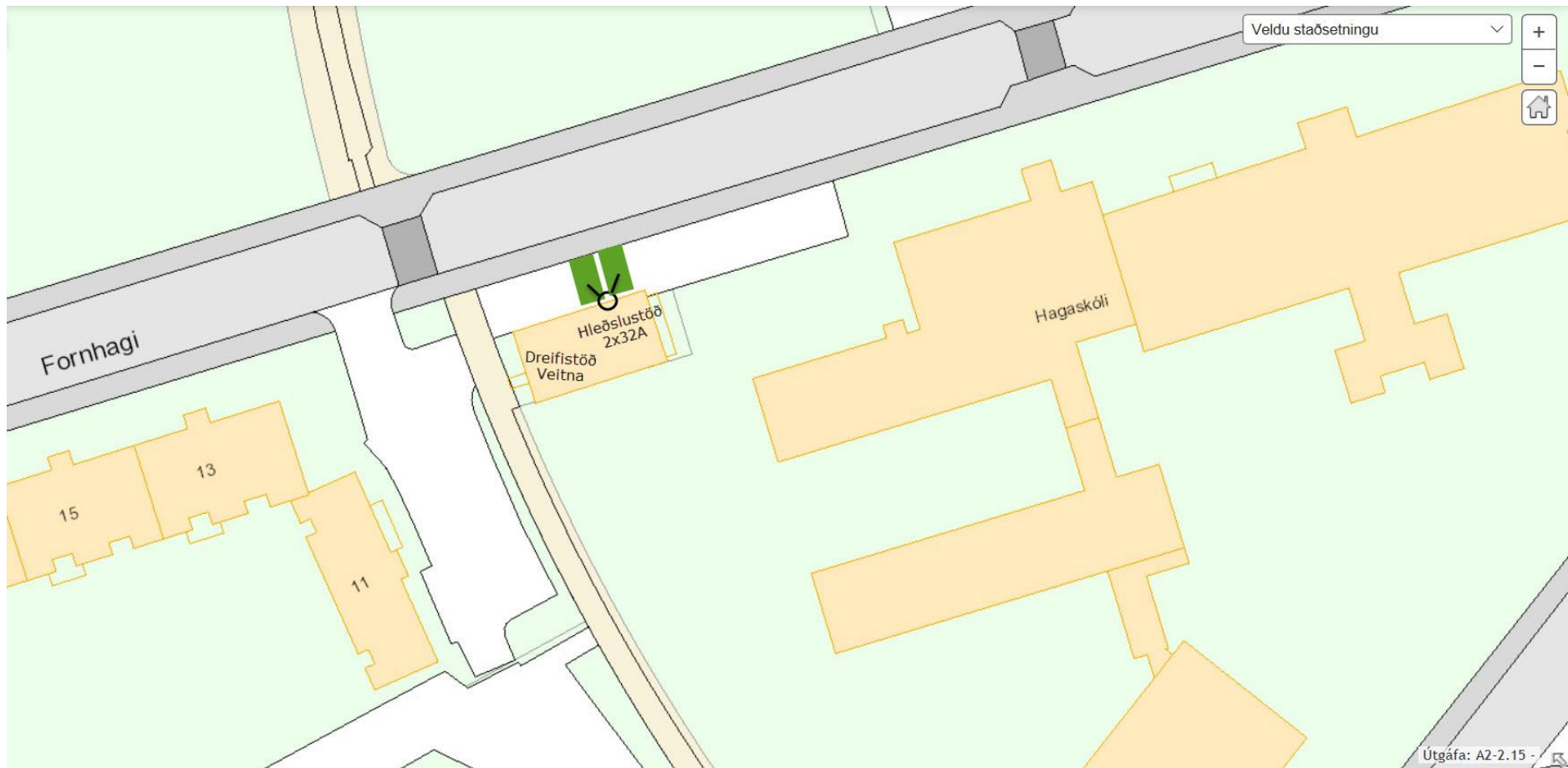
Hleðslustöð 2x32A



Kort

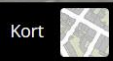


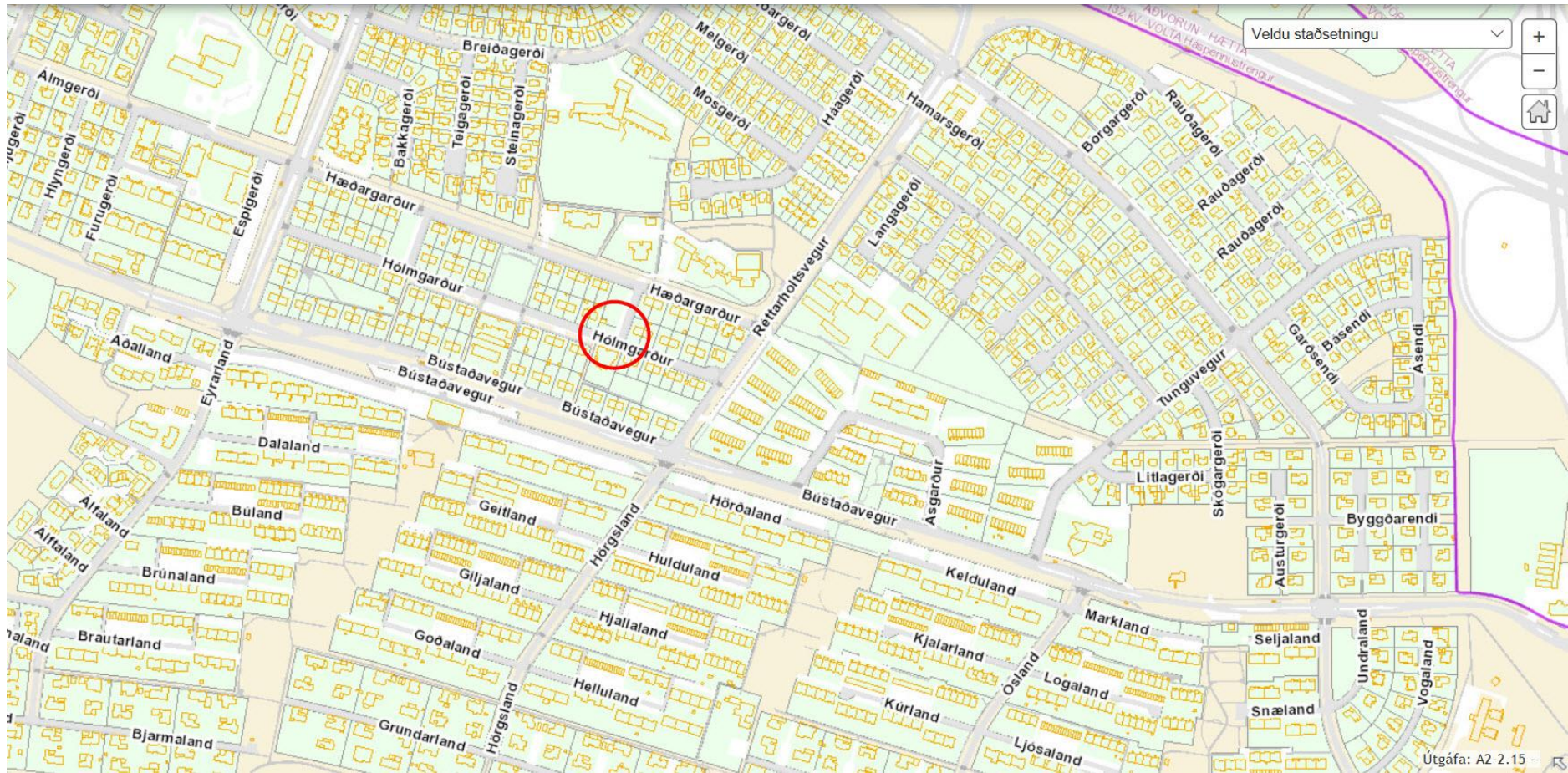






Flakk Senda ábendingu

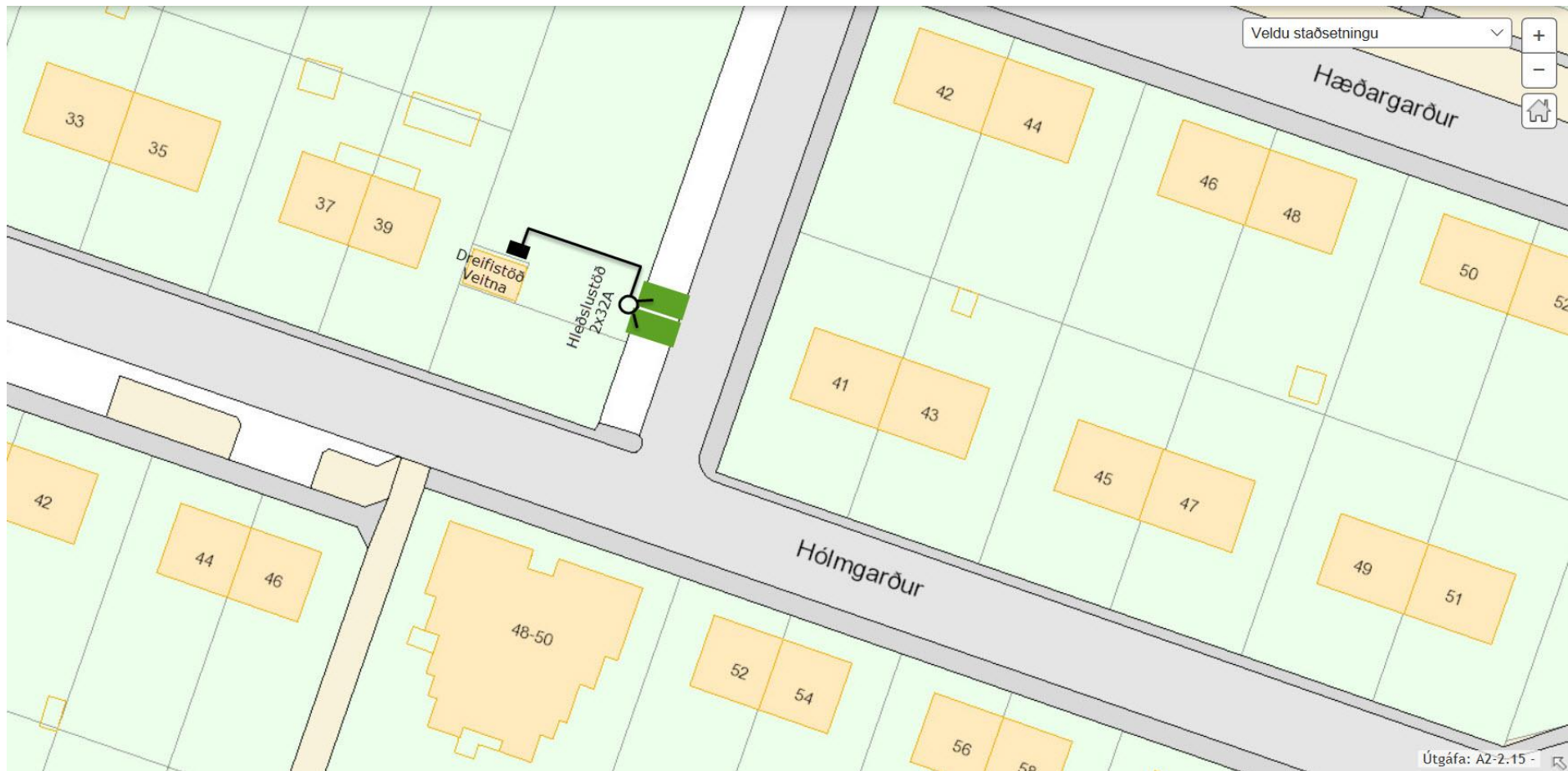




Veldu staðsetningu

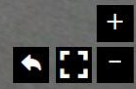
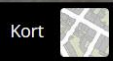
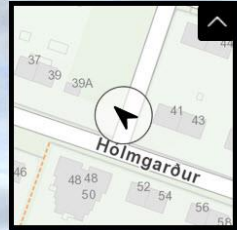


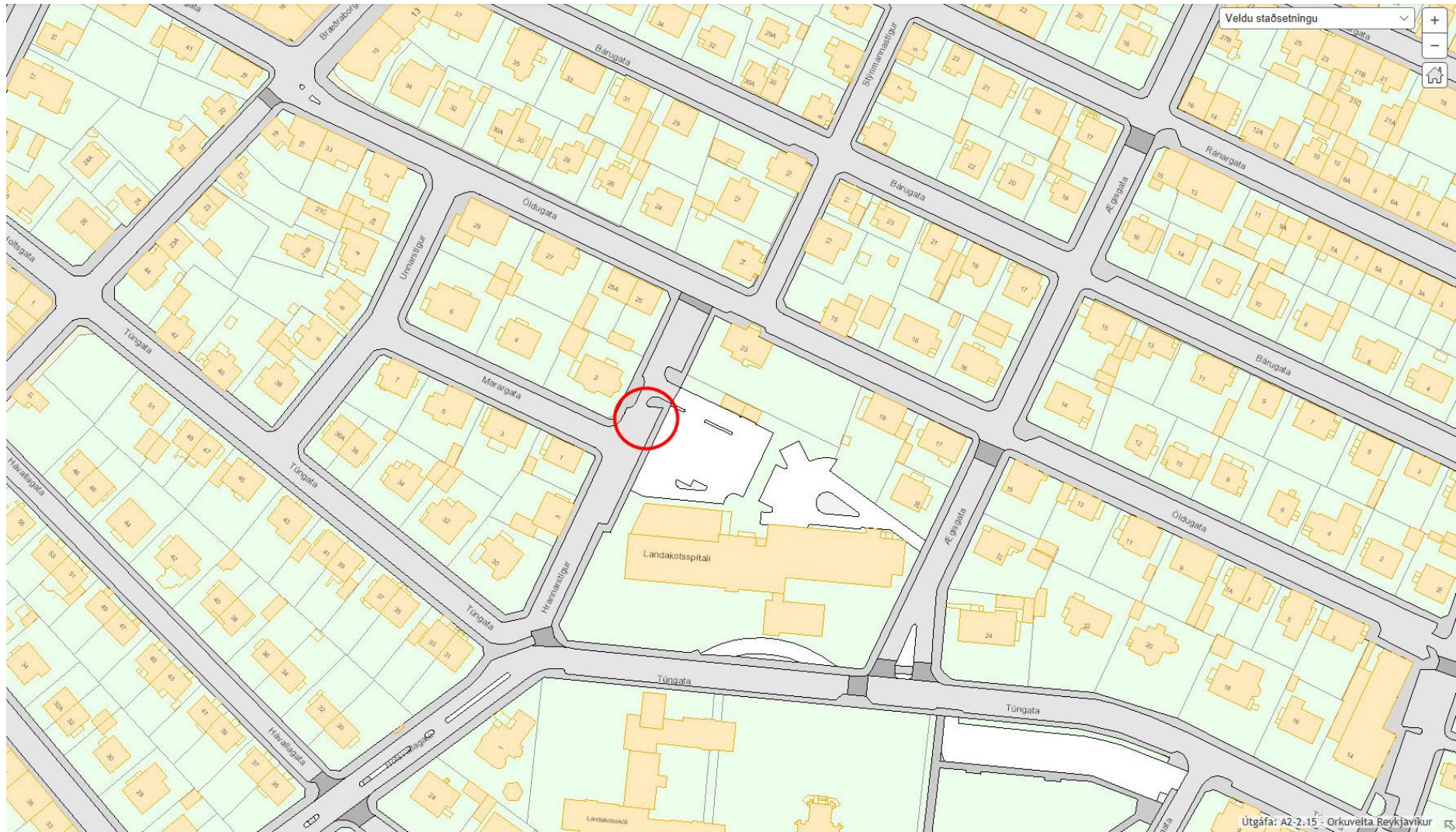
Útgáfa: A2-2.15





Flakk Senda ábendingu



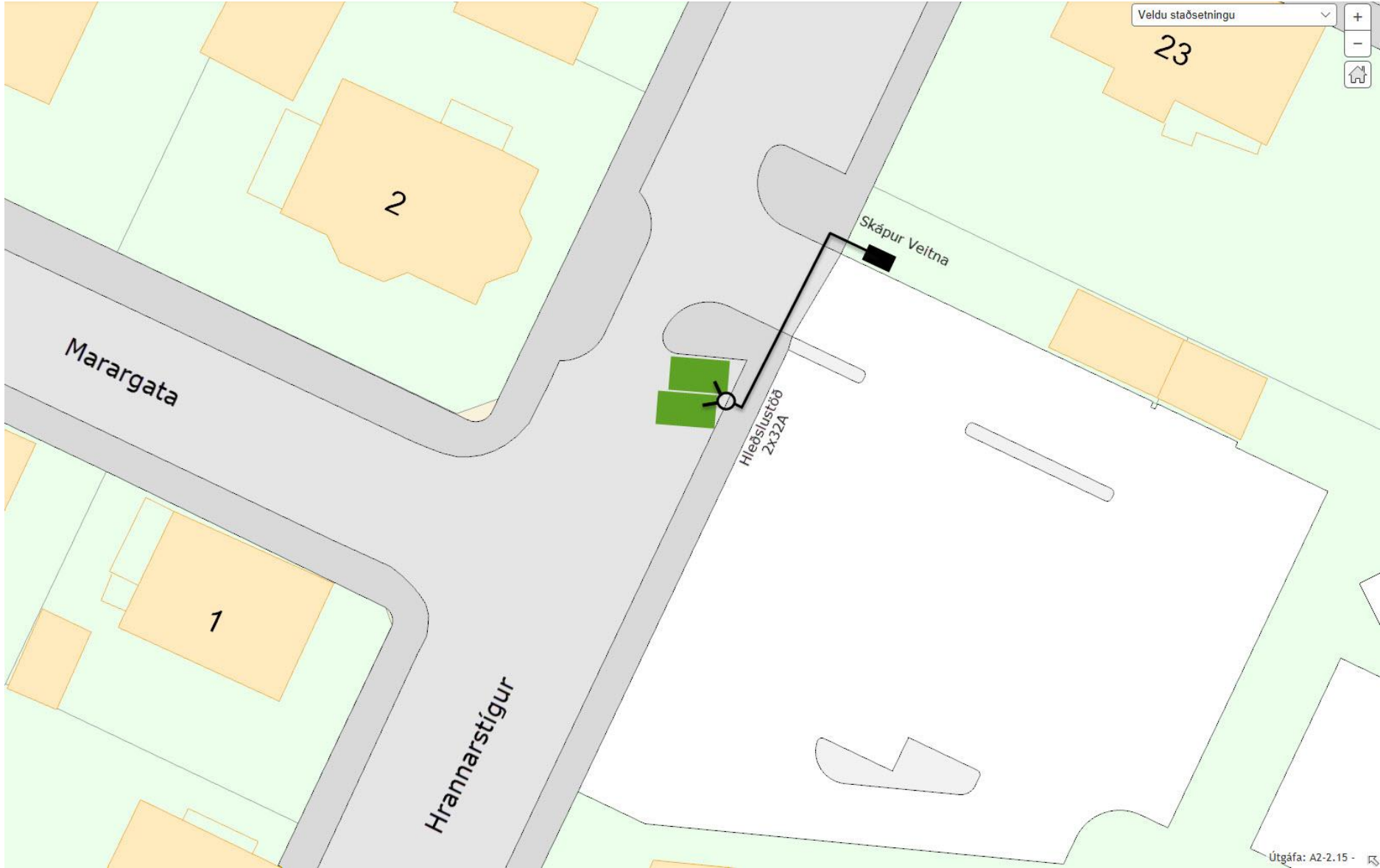


Veldu staðsetningu



Landakotsspítali

Útgáfa: A2-2.15 - Orkuveita Reykjavíkur



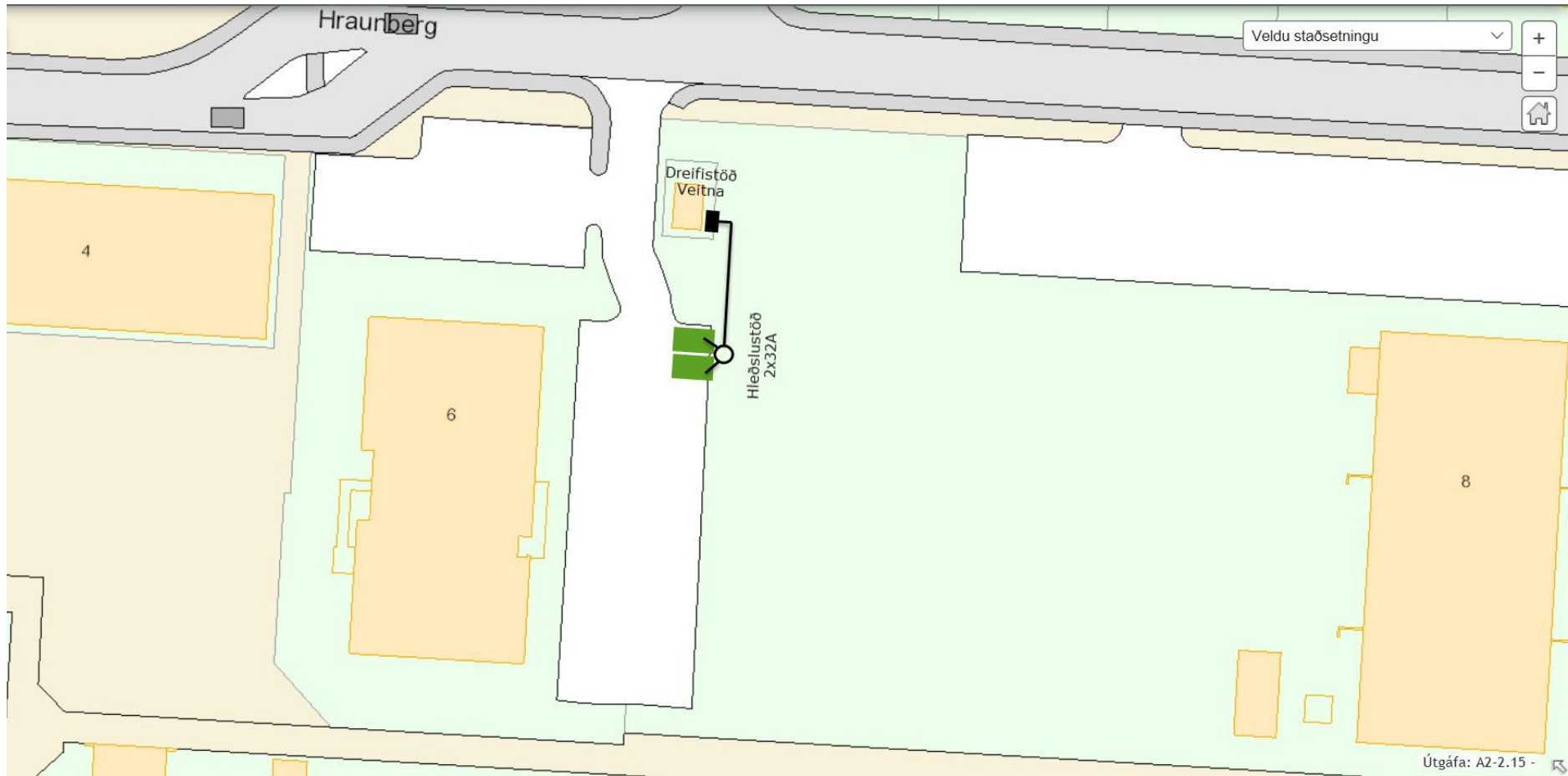


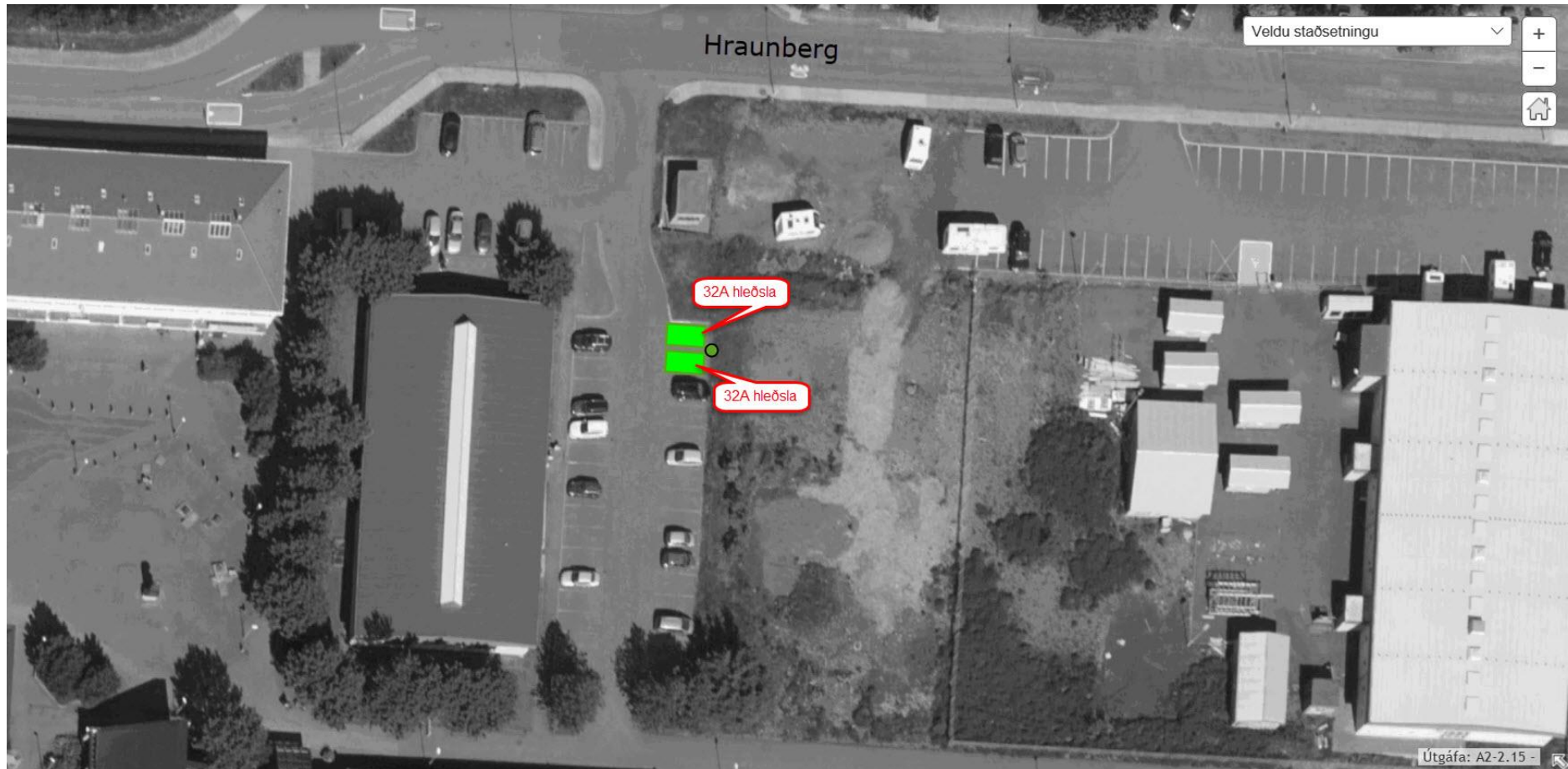


Hleðslustöð 2x32A

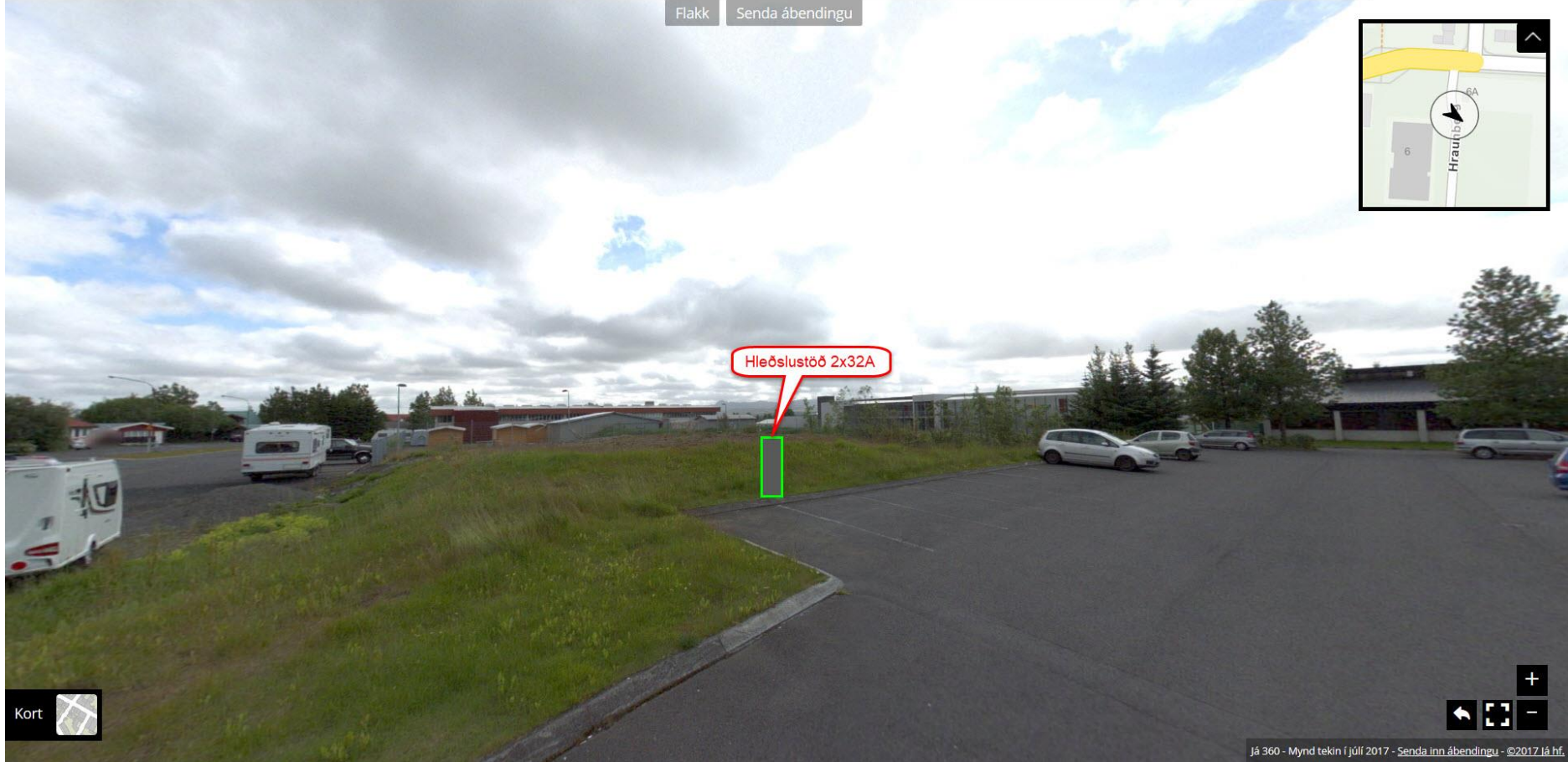
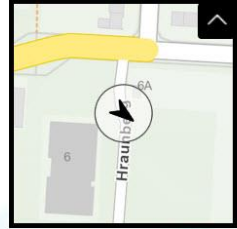
Kort

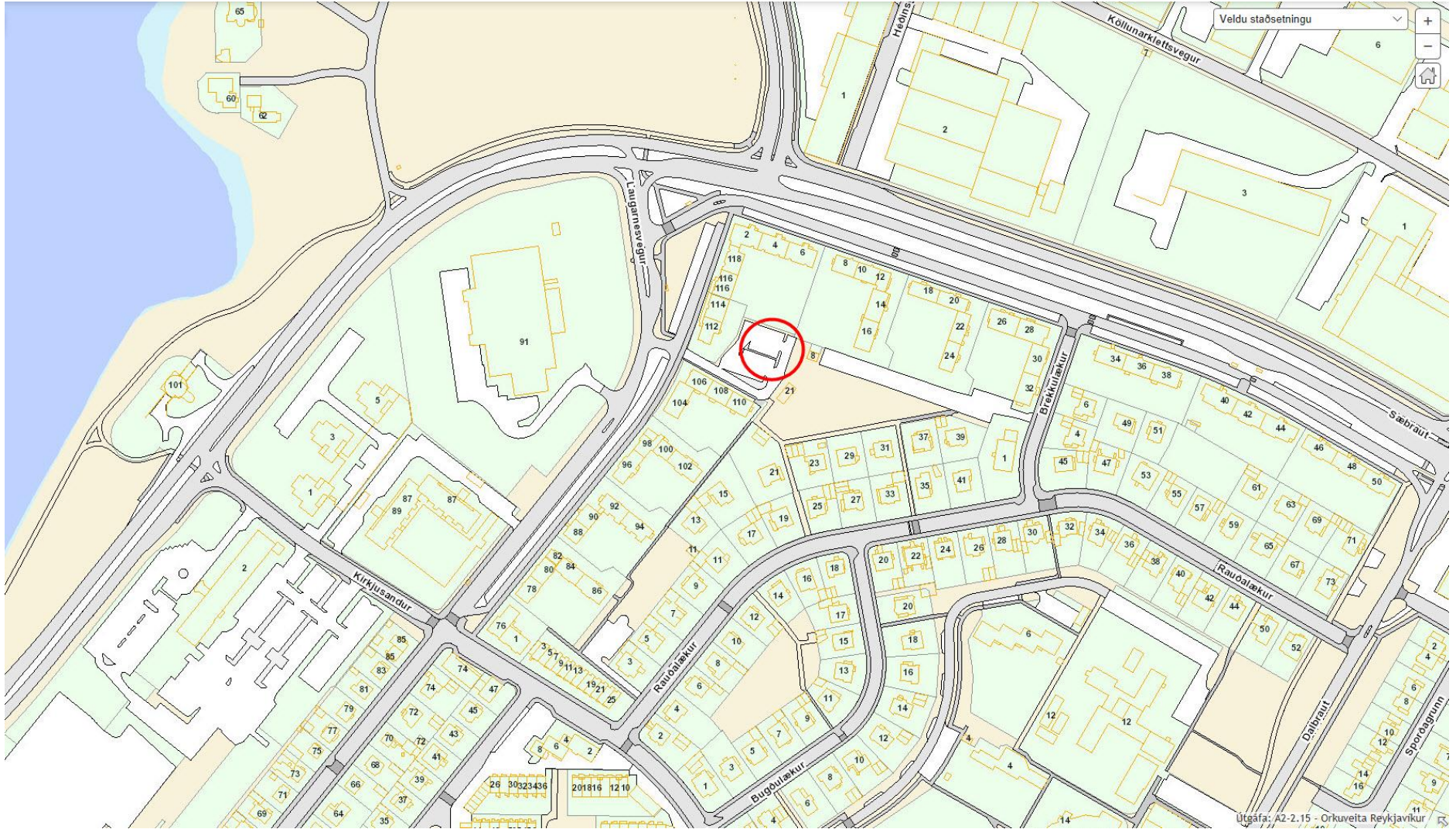


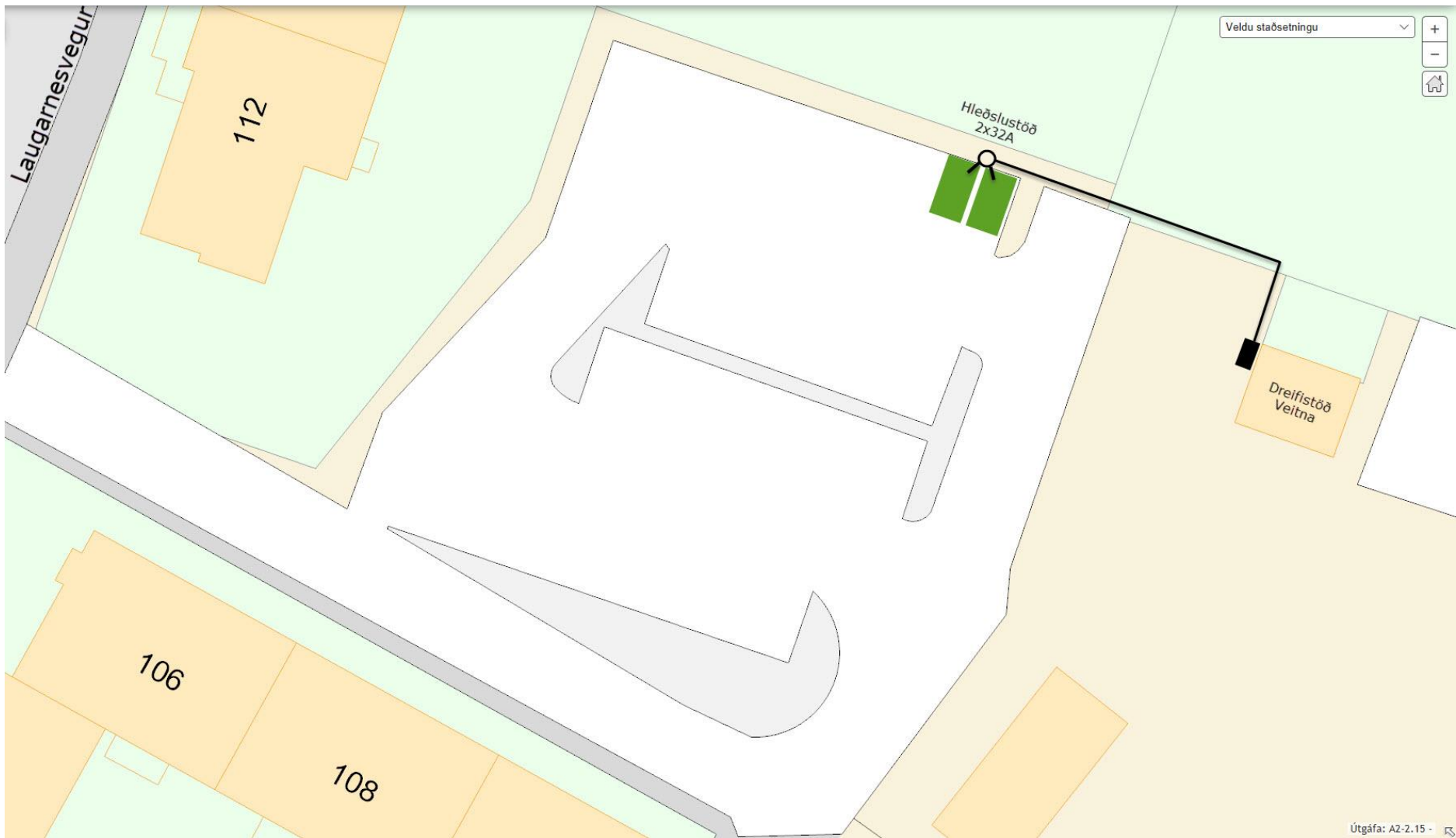


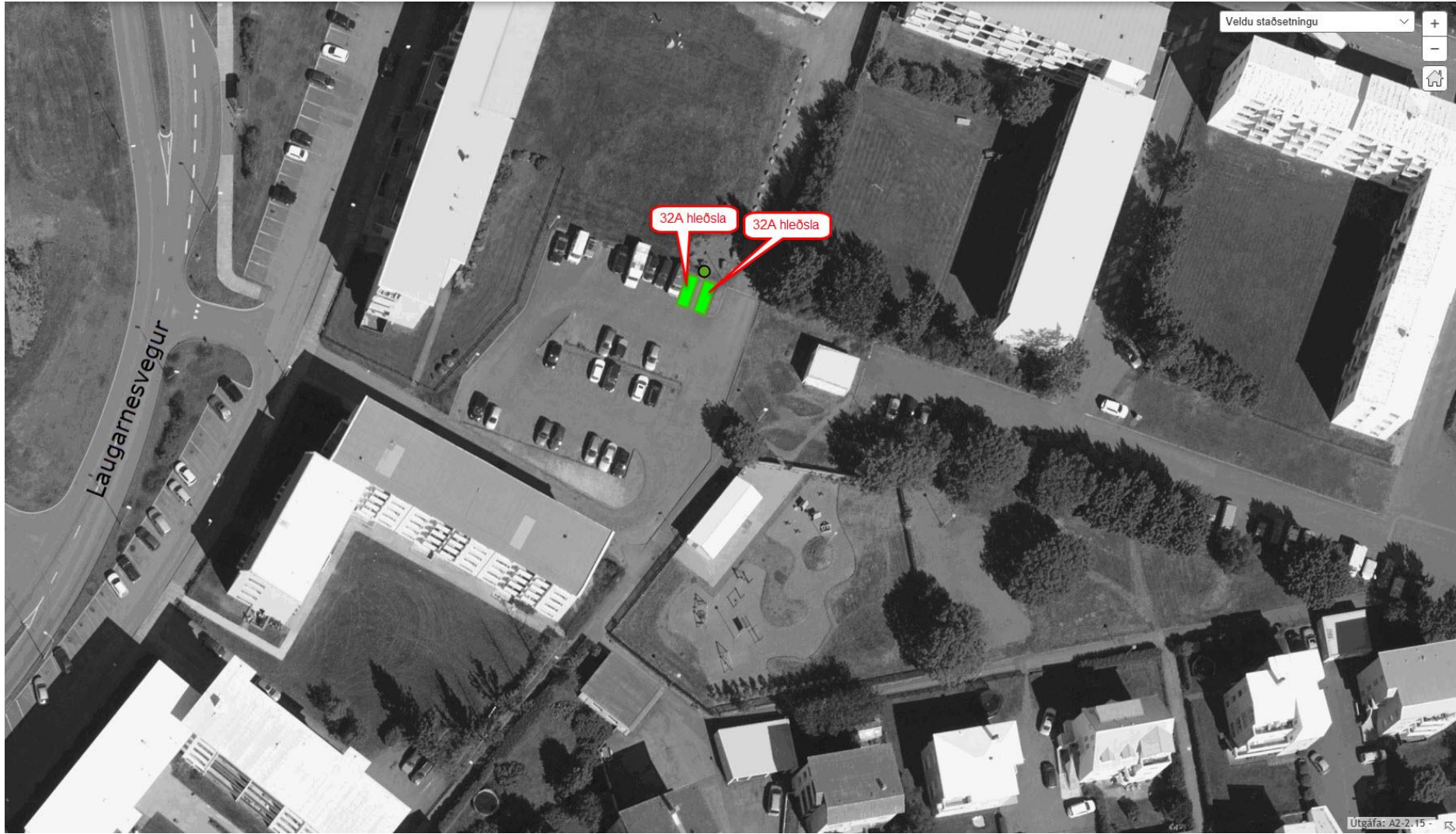


Flakk Senda ábendingu





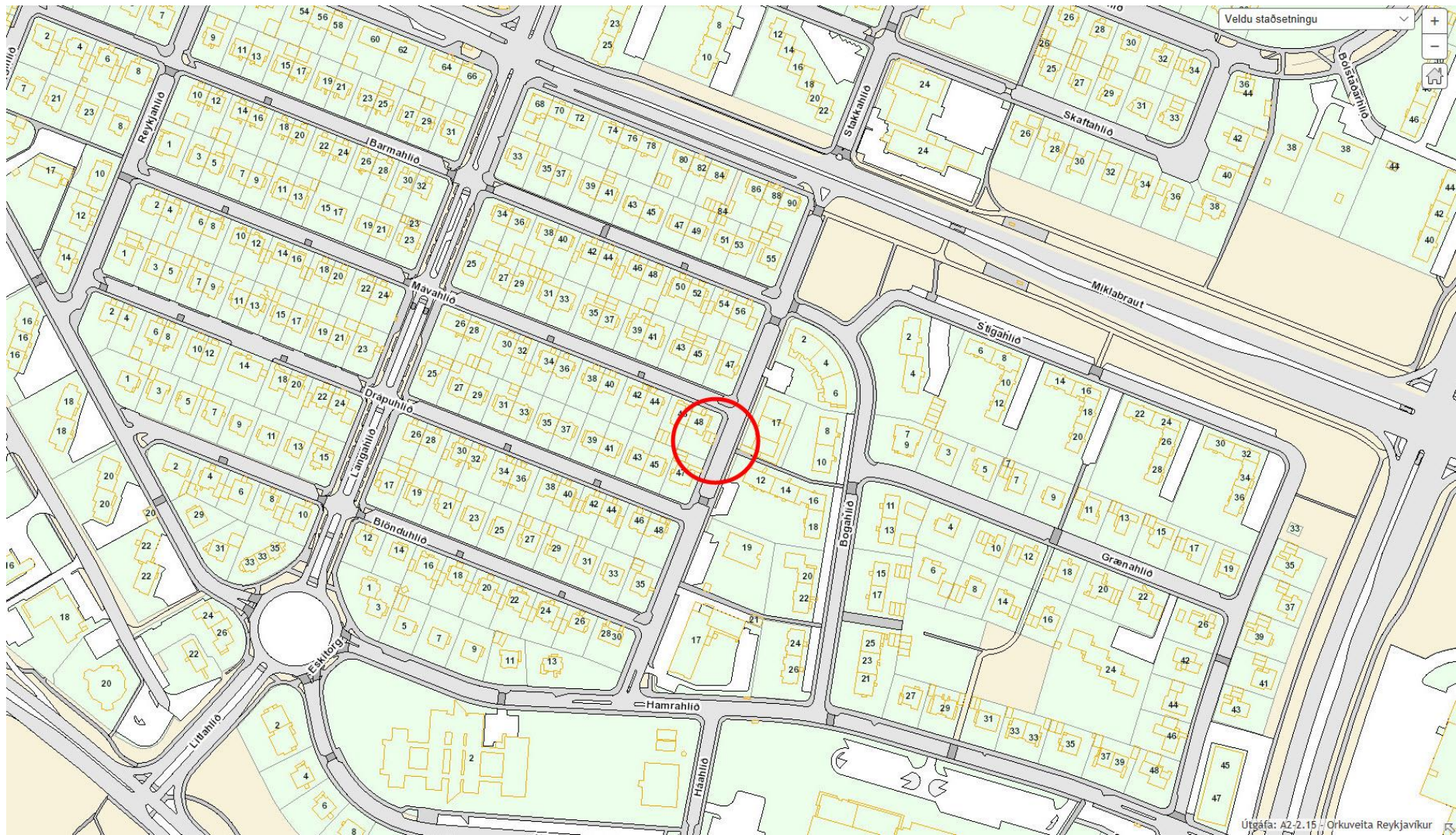




Flakk Senda ábendingu



Kort



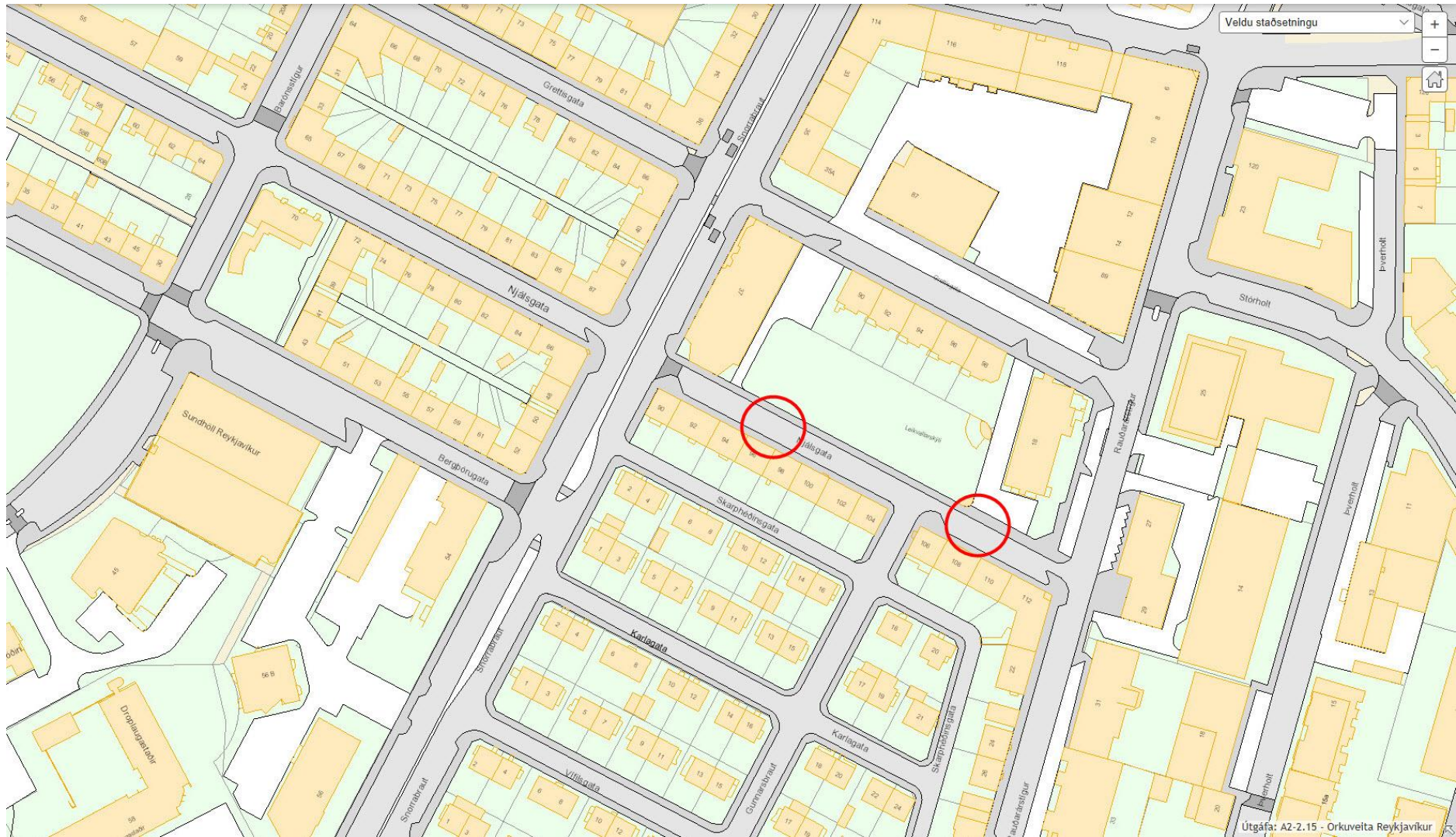






Hleðslustöð 2x32A

Kort







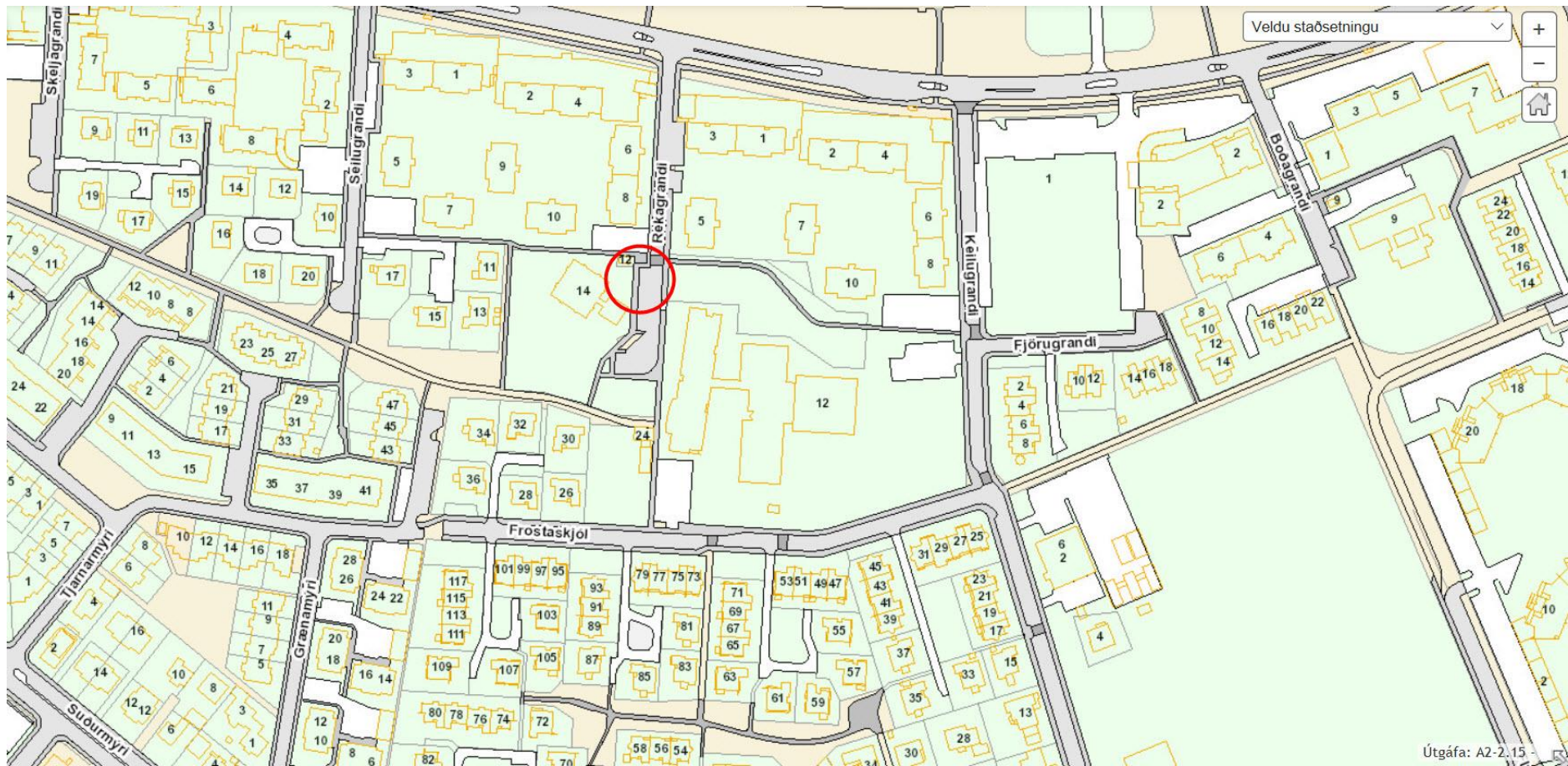


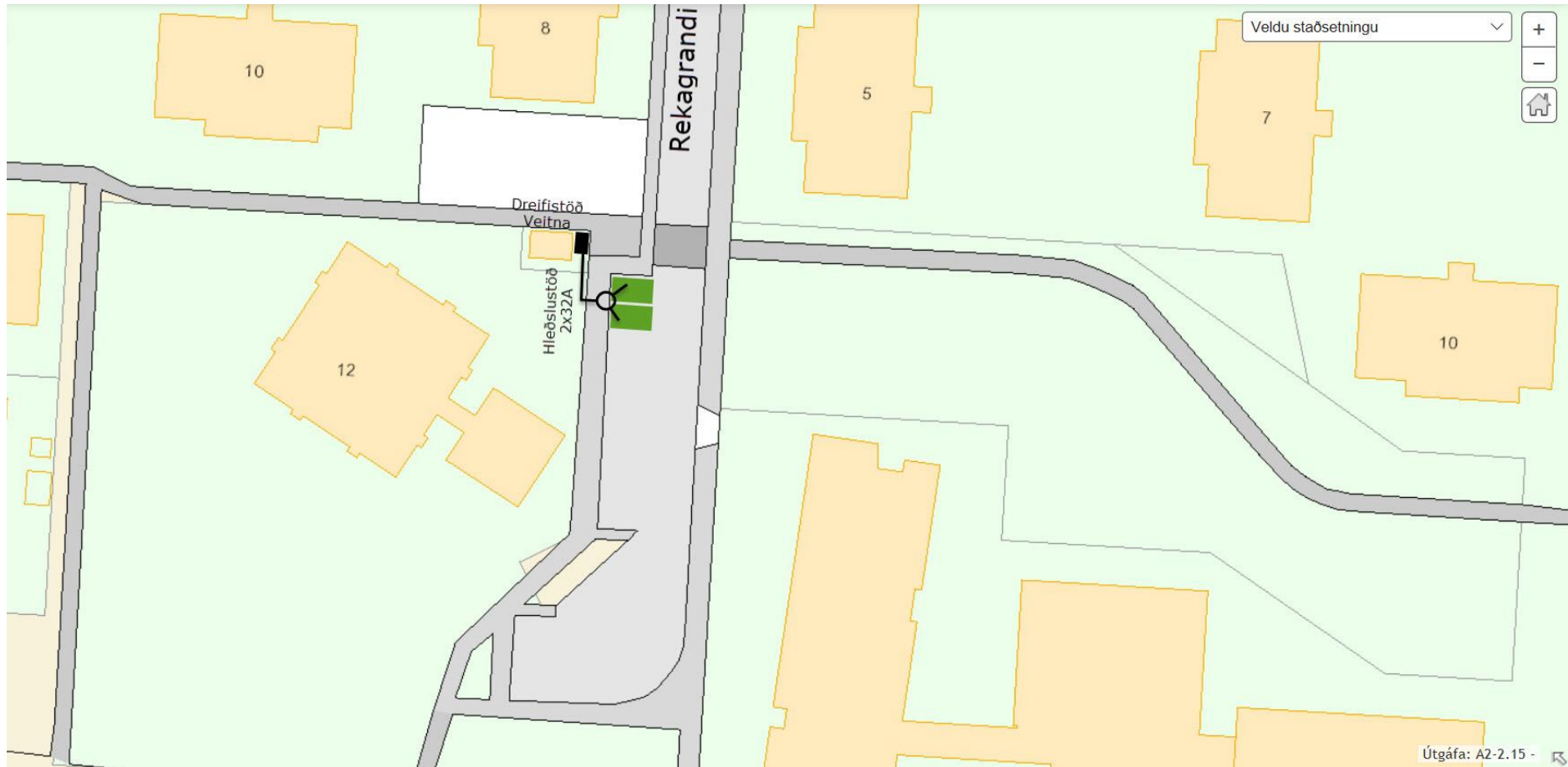
Hleðslustöð 2x32A

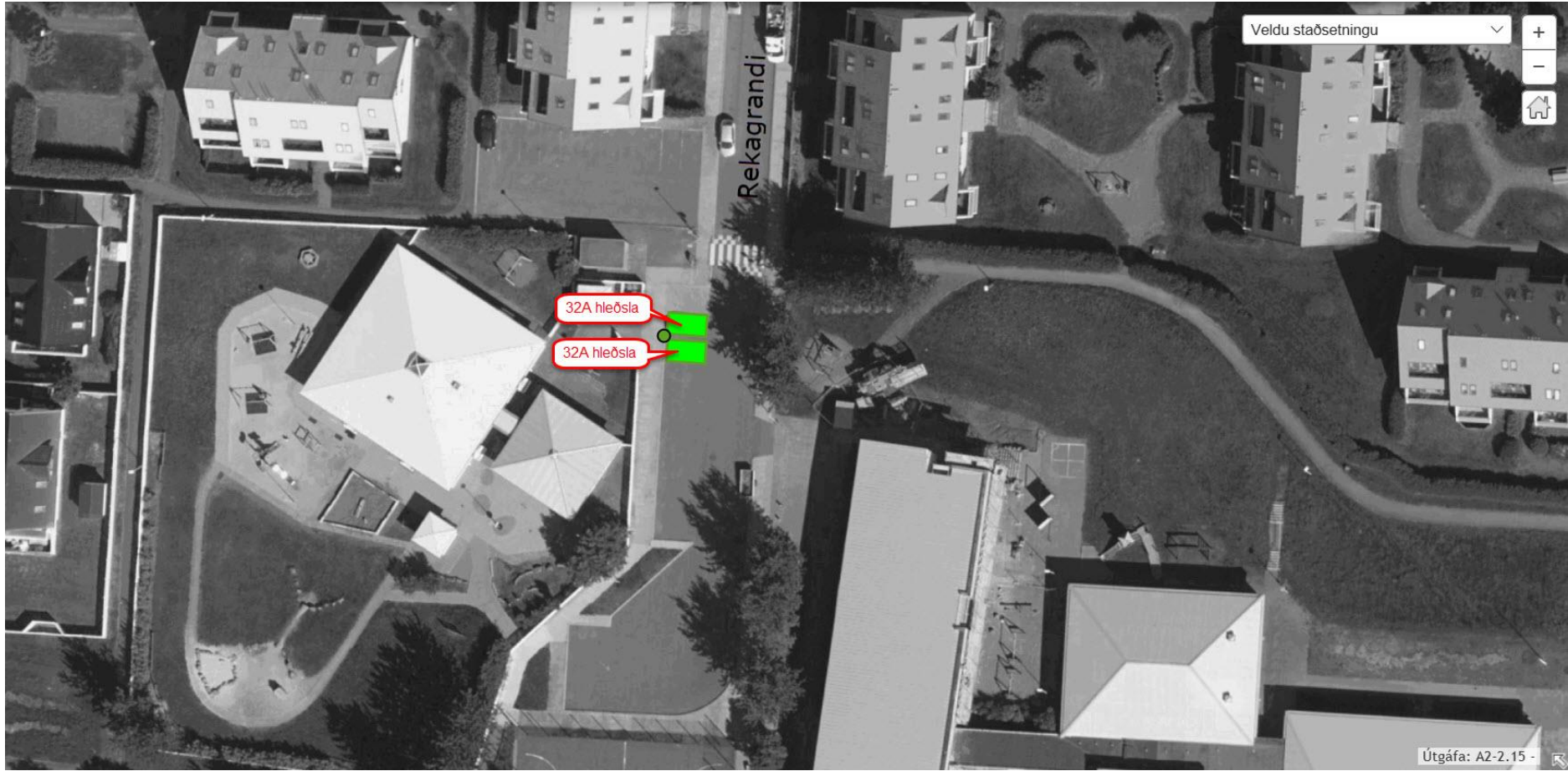
Kort



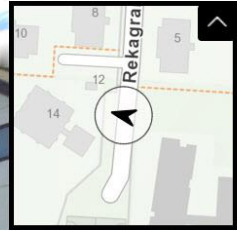
Hleðslustöð 2x32A







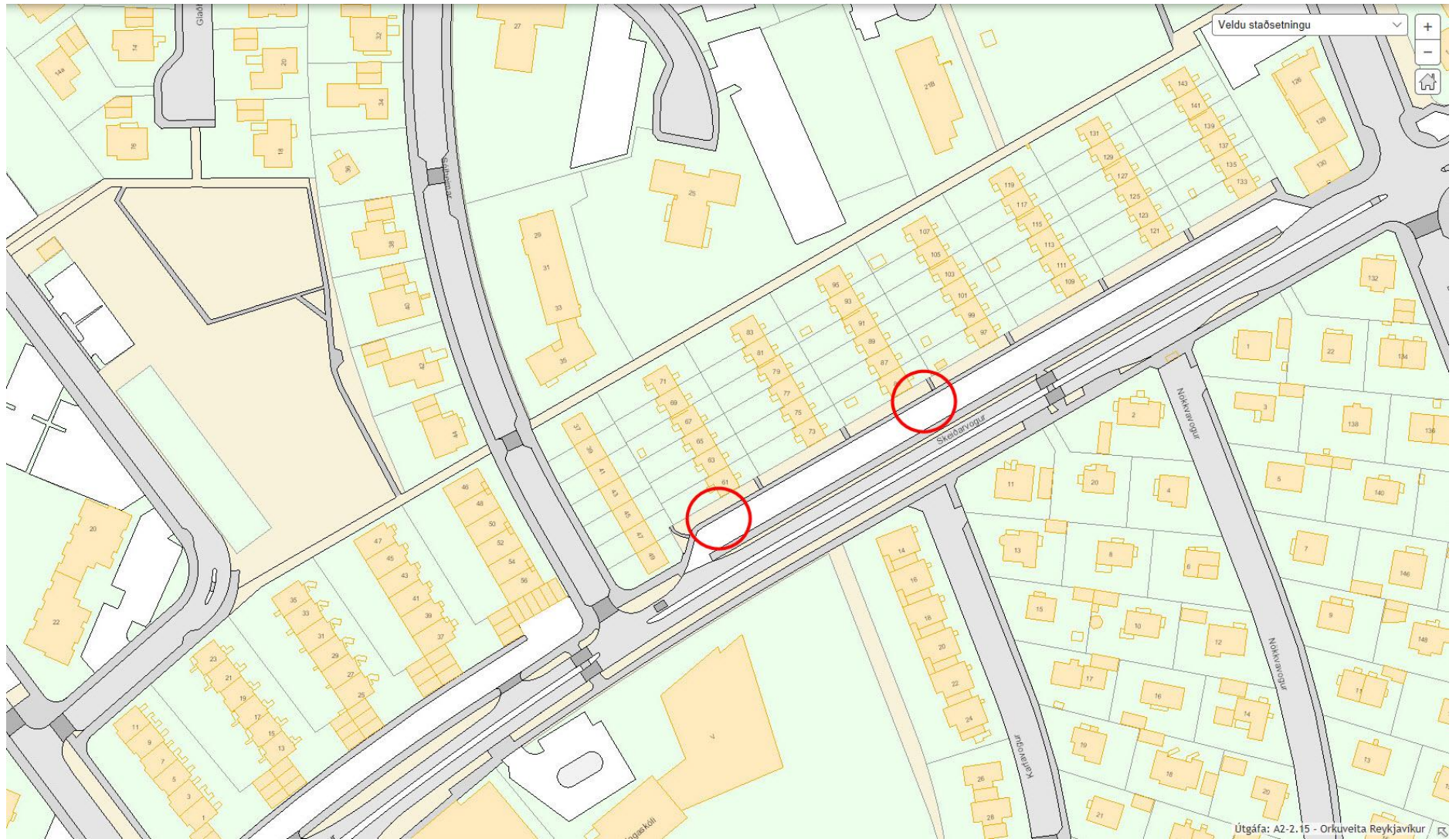
Flakk Senda ábendingu



Hleðslustöð 2x32A

Kort





Veldu staðsetningu



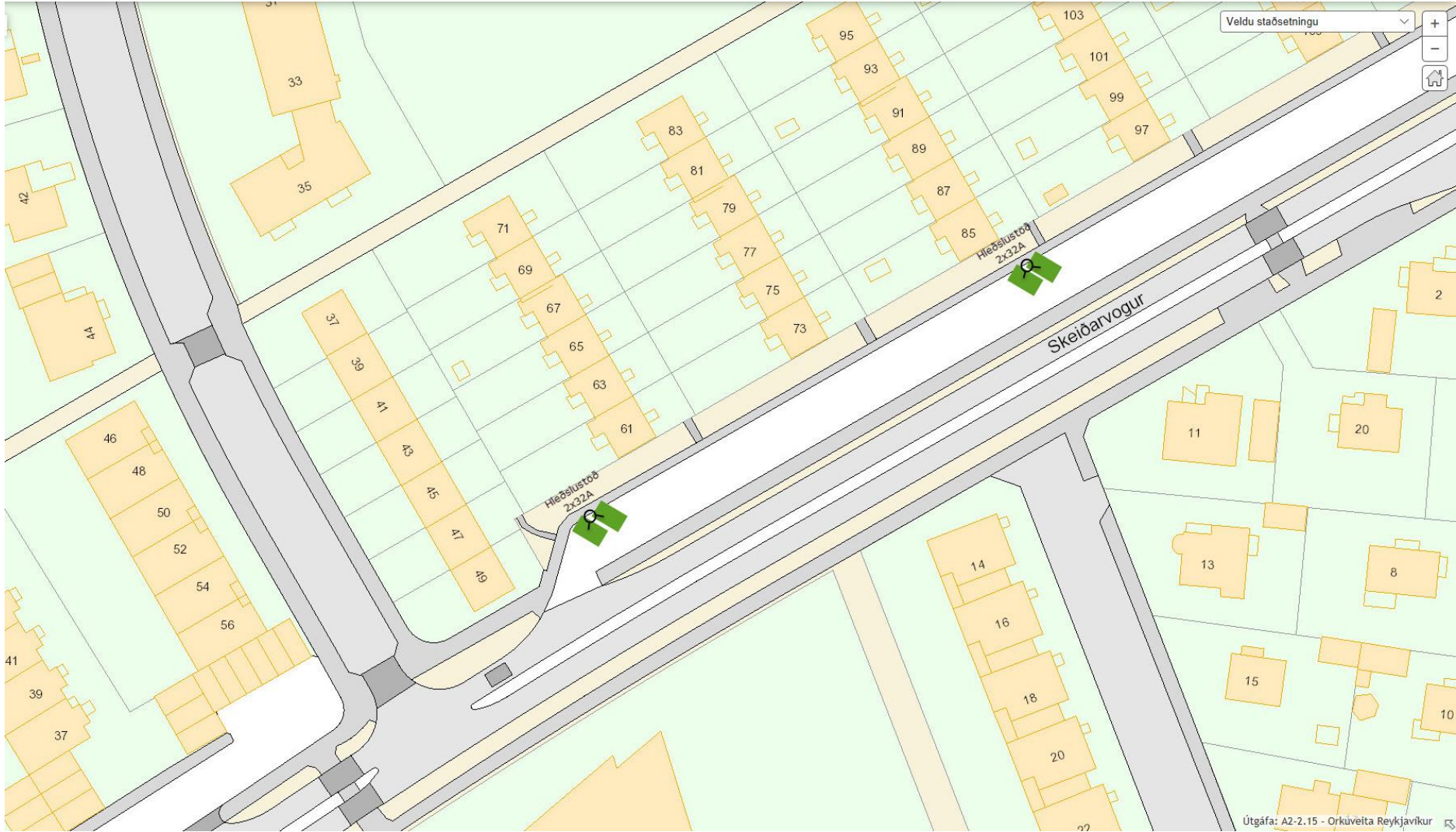
Skólabátvegur

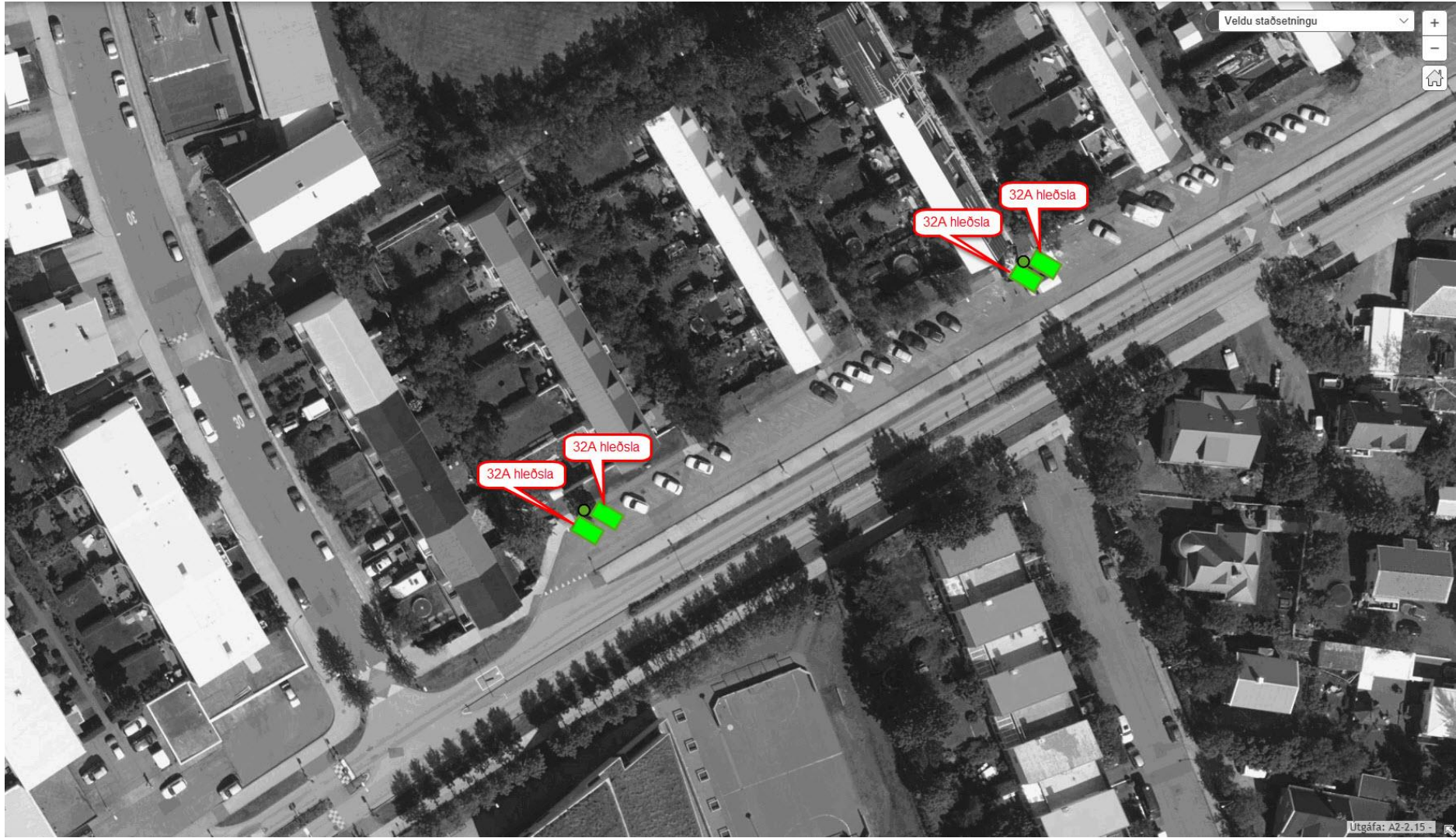
Nokkvaðvegur

Nokkvaðvegur

Kettuvogur

Útgáfa: A2-2.15 - Orkuveita Reykjavíkur

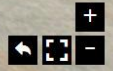




Flakk Senda ábendingu



Kort

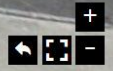


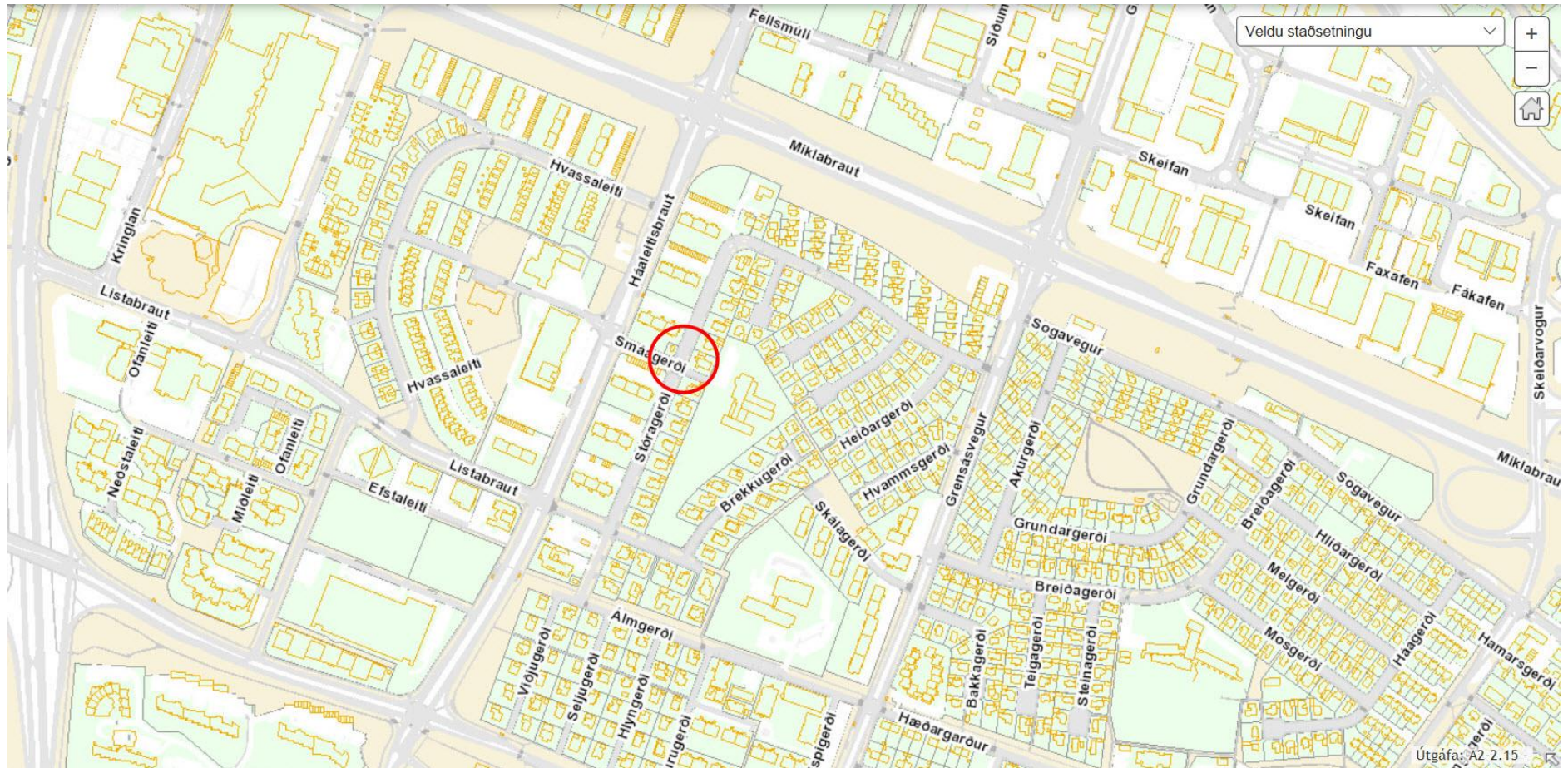
Flakk Senda ábendingu



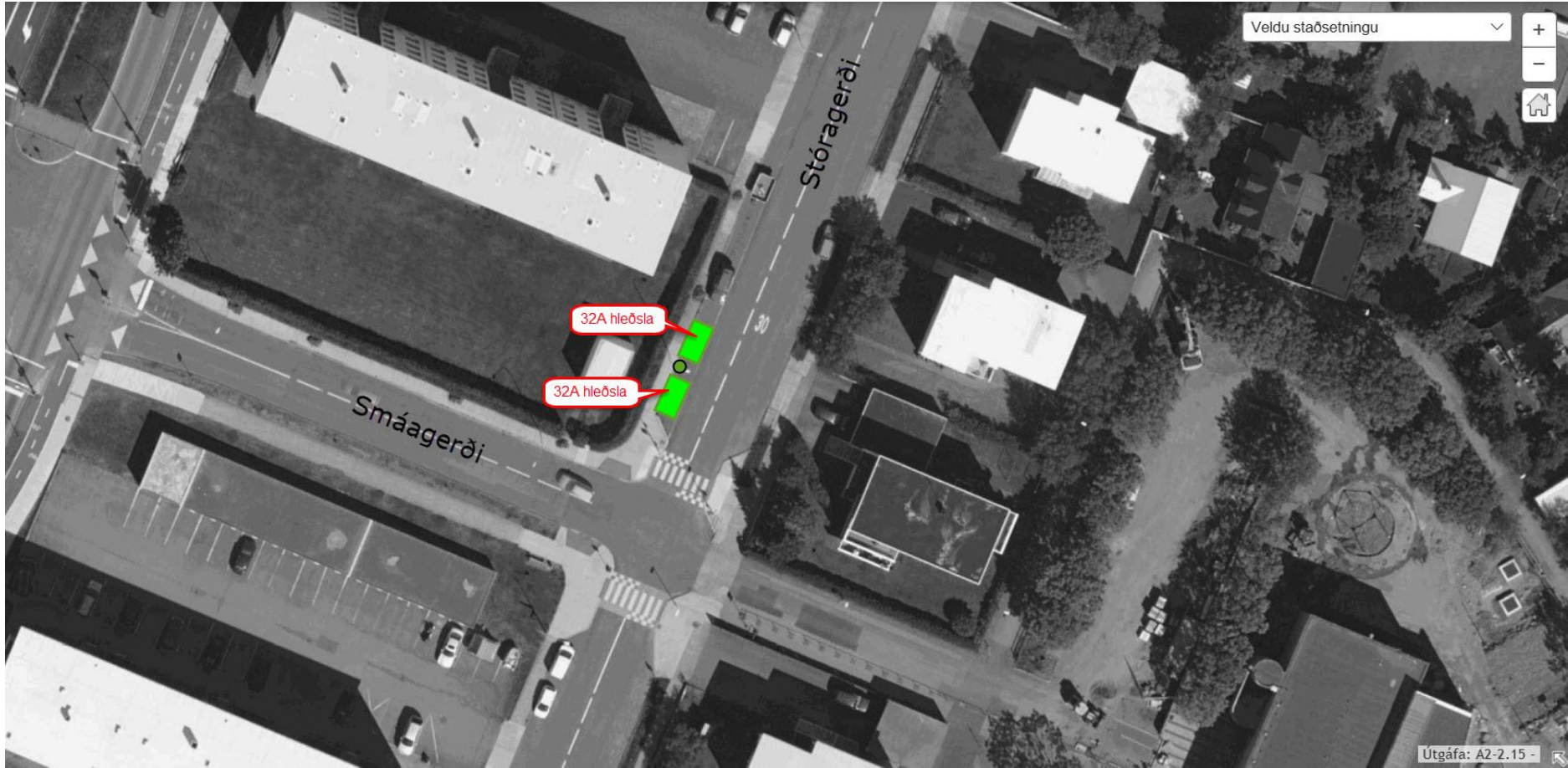
Hleðslustöð 2x32A

Kort

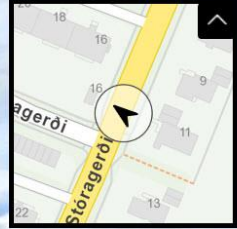






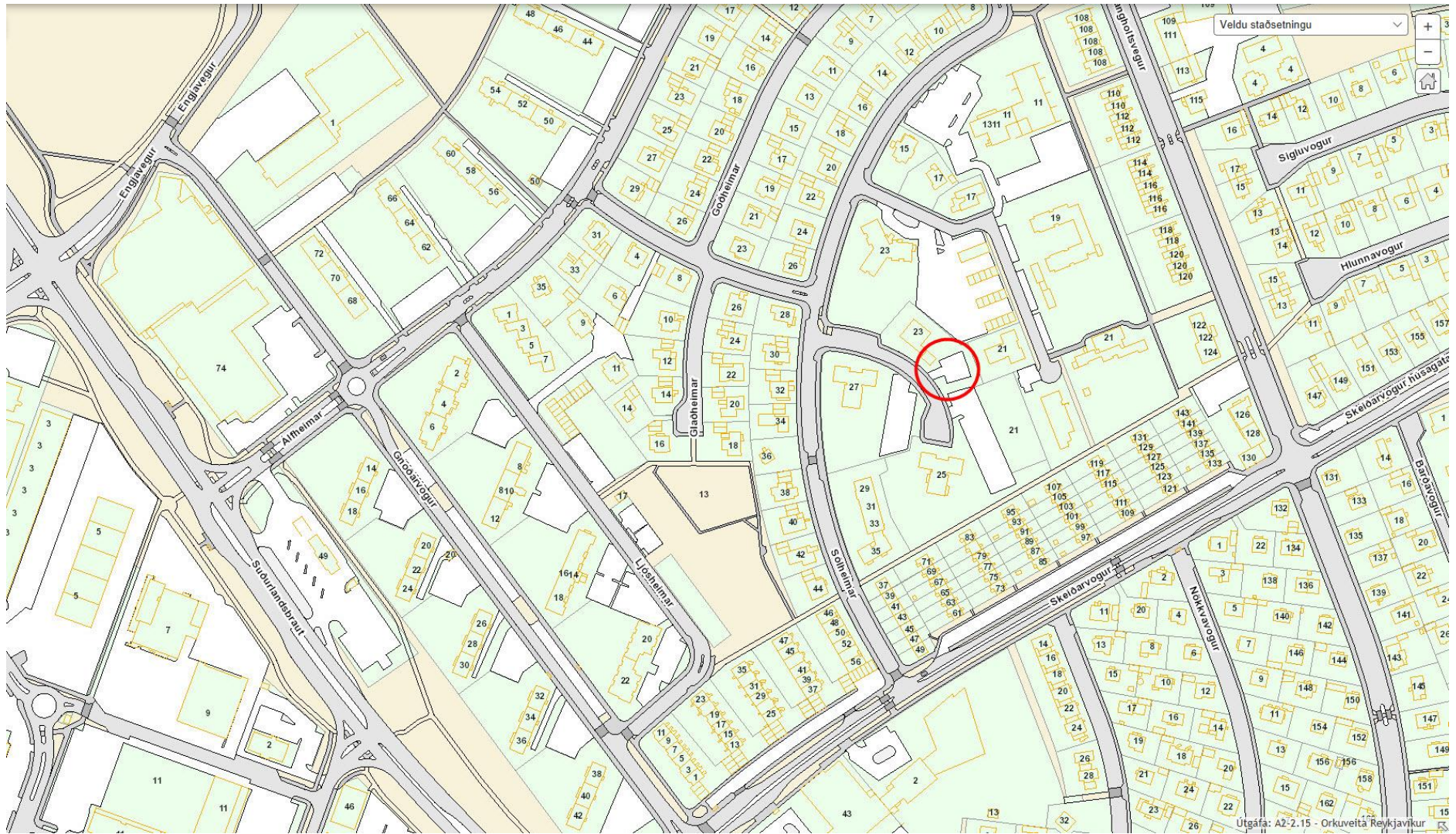


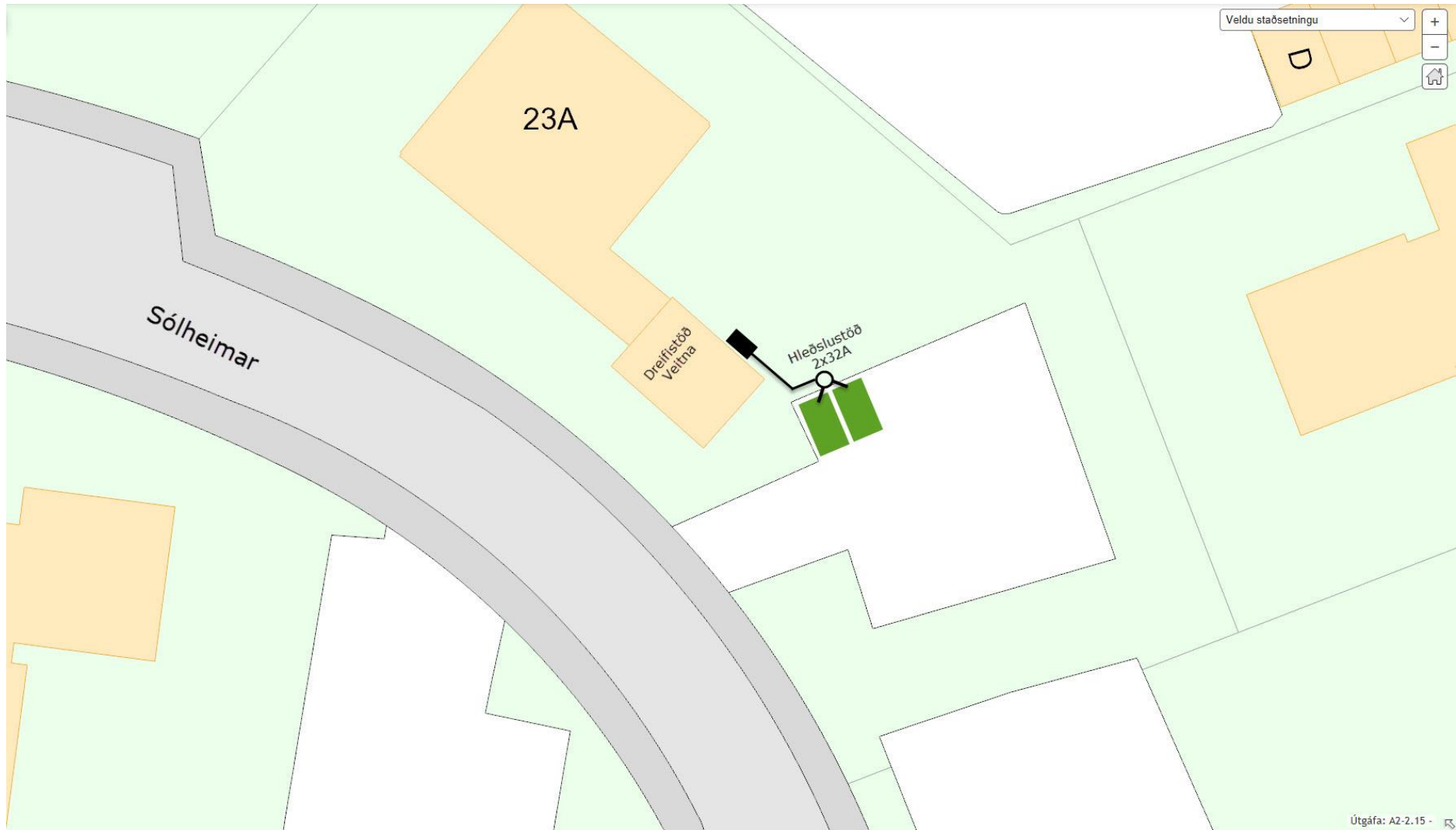
Flakk Senda ábendingu



Kort

Map navigation controls: zoom in (+), zoom out (-), pan, etc.







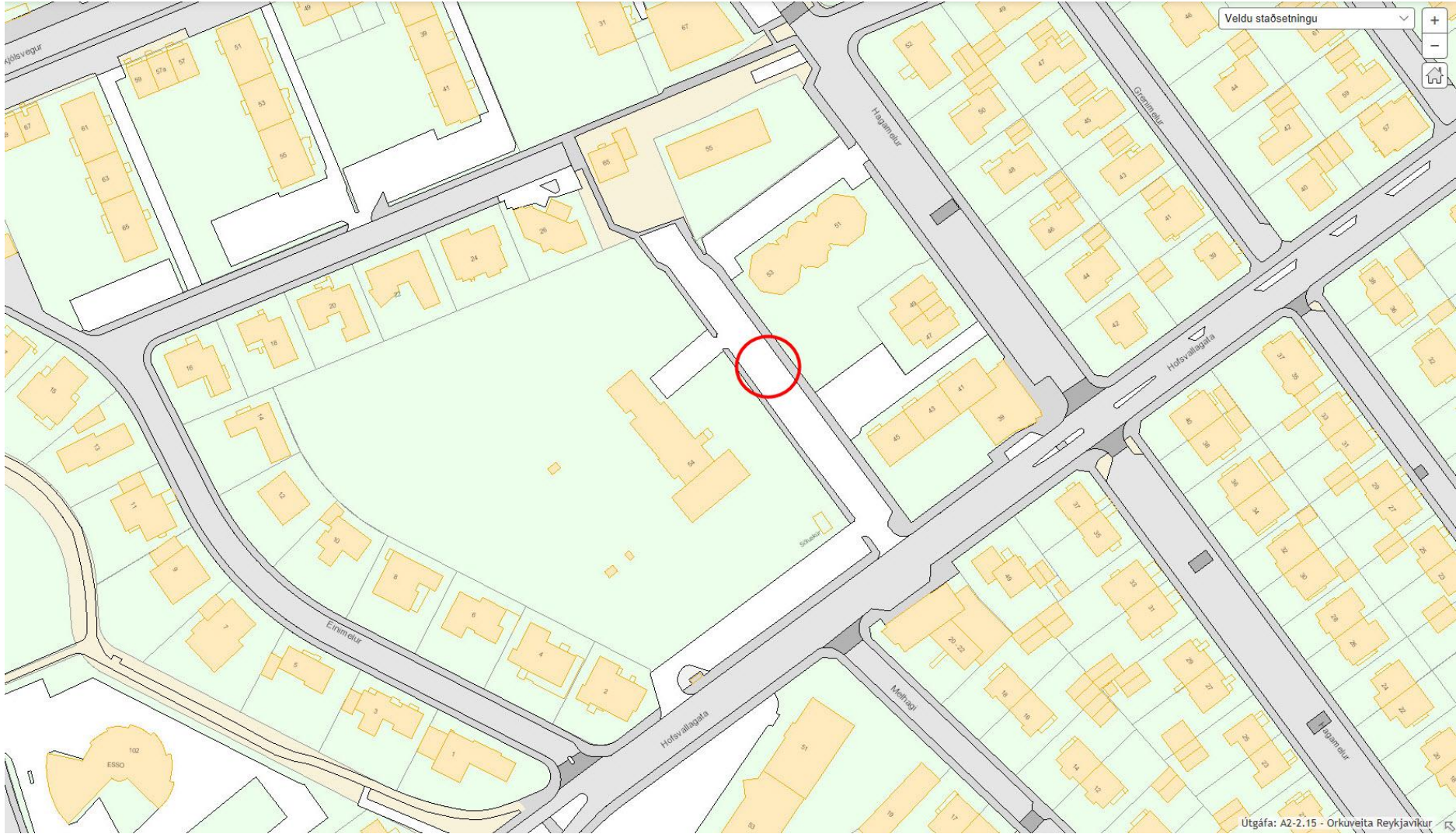
Flakk Senda ábendingu

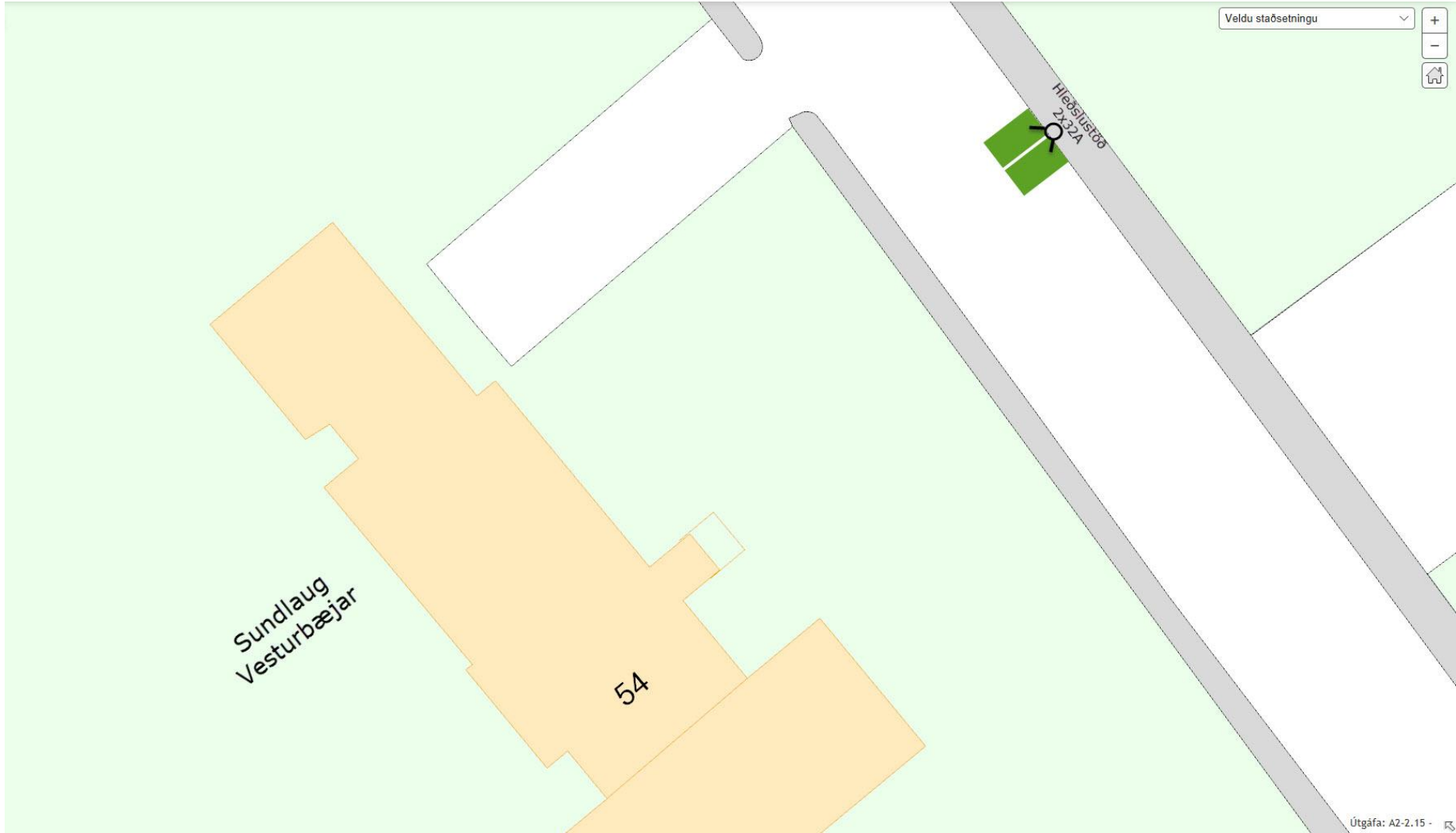


Hleðslustöð 2x32A

Kort

Navigation icons: Back, Home, Forward, Full Screen, Zoom In, Zoom Out









Flakk Senda ábendingu



Hleðslustöð 2x32A

Kort



já 360 - Mynd tekin í júlí 2017 - Senda inn ábendingu - ©2017 já hf.



Skipulags- og samgönguráð Reykjavíkur

Borgartúni 12-14
105 Reykjavík

Hleðslustæði á borgarlandi í tilraunaverkefni Orkuveitu Reykjavíkur og Reykjavíkurborgar

Þann 12. apríl sl. var samþykkt í borgarráði tillaga borgarstjóra um tilrauna- og þróunarverkefni með Orkuveitu Reykjavíkur (OR). Eitt af verkefnum var að staðsetja og reisa hleðslustaura á 10 stöðum í borgarlandi Reykjavíkur, á svæðum þar sem einkabílastæði eru ekki almenn. Hlutverk Reykjavíkurborgar í verkefninu var, sem eigandi borgarlandsins, að koma að vali á staðsetningum og þróa reglur um ásýnd, nýtingu og aðgengi.

Í samstarfi við OR hafa verið valdir 13 staðir sem taldir eru heppilegir í verkefnið en gert er ráð fyrir að koma hleðslustöðvum upp við 10-13 þeirra með tveim tenglum á hverri stöð. Meðfylgjandi er kort sem sýnir umrædda staði og afstöðumyndir. Gert er ráð fyrir að verkefnið standi í 5 ár og ákvarðanir um áframhaldandi rekstur hleðslustöðvanna verði teknar að því loknu. Stæði sem hleðslustöðvarnar standa við verða merkt sem stæði til hleðslu rafbíla og innheimt verður fyrir raforku samkvæmt gjaldskrá Orku náttúrunnar ohf. (ON). Uppsetning hleðslustöðvanna mun hefjast strax á nýju ári þegar veður leyfir.

Lagt er til að skipulags- og samgönguráð samþykki notkun eftirfarandi stæða með framangreinum hætti:

1. Breiðholtsskóli við Arnarbakka
2. Hagaskóli við Fornhaga
3. Hólmgarður - Hæðargarður
4. Hrannarstígur við Landakotsspítala
5. Hraunberg

6. Laugarnesvegur
7. Mávahlíð - Stakkahlíð
8. Njálsgata austan Snorrabrautar
9. Rekagrandi
10. Skeiðarvogur sunnan Langholtsvegur
11. Smáagerði - Stóragerði
12. Sólheimar við bókasafn
13. Sundlaug Vesturbæjar

Virðingarfyllst,



Guðmundur B. Friðriksson
skrifstofustjóri skrifstofu umhverfisgæða

Hjálagt:

Kort sem sýnir staðsetningar stæða
Afstöðumynd hvers stæðis