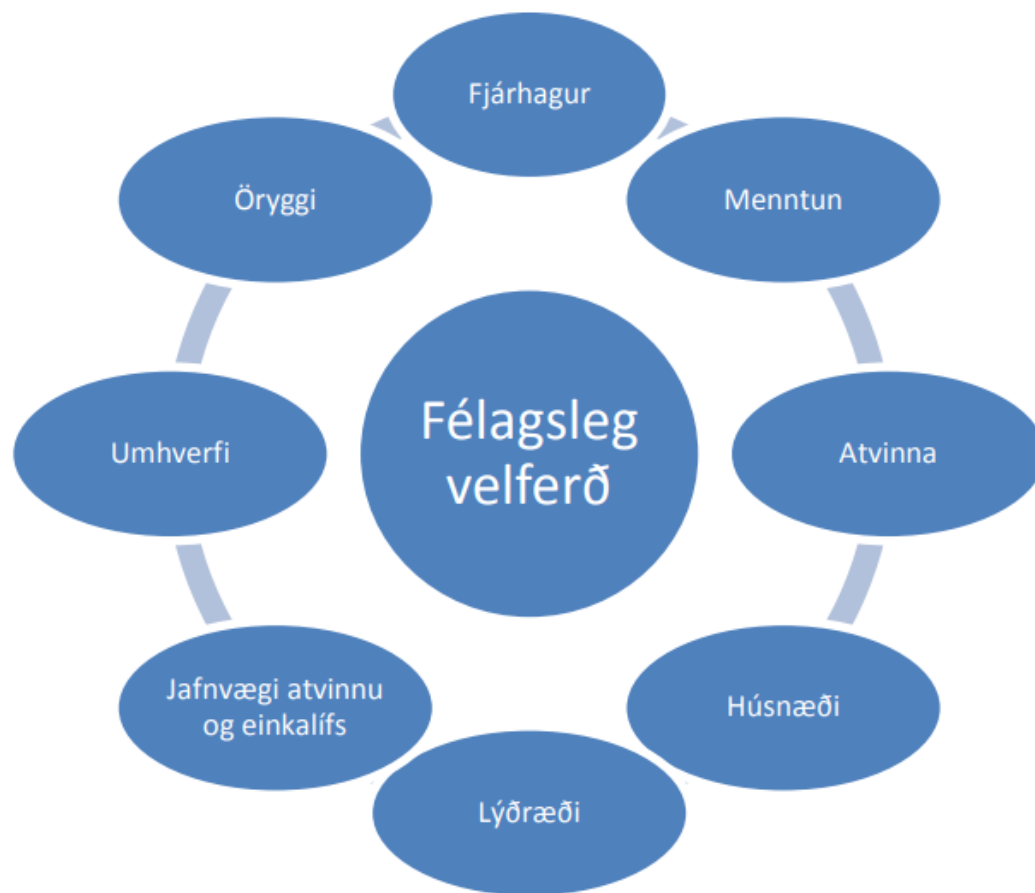


Félagssvísar um innflytjendur

Hagstofa Íslands

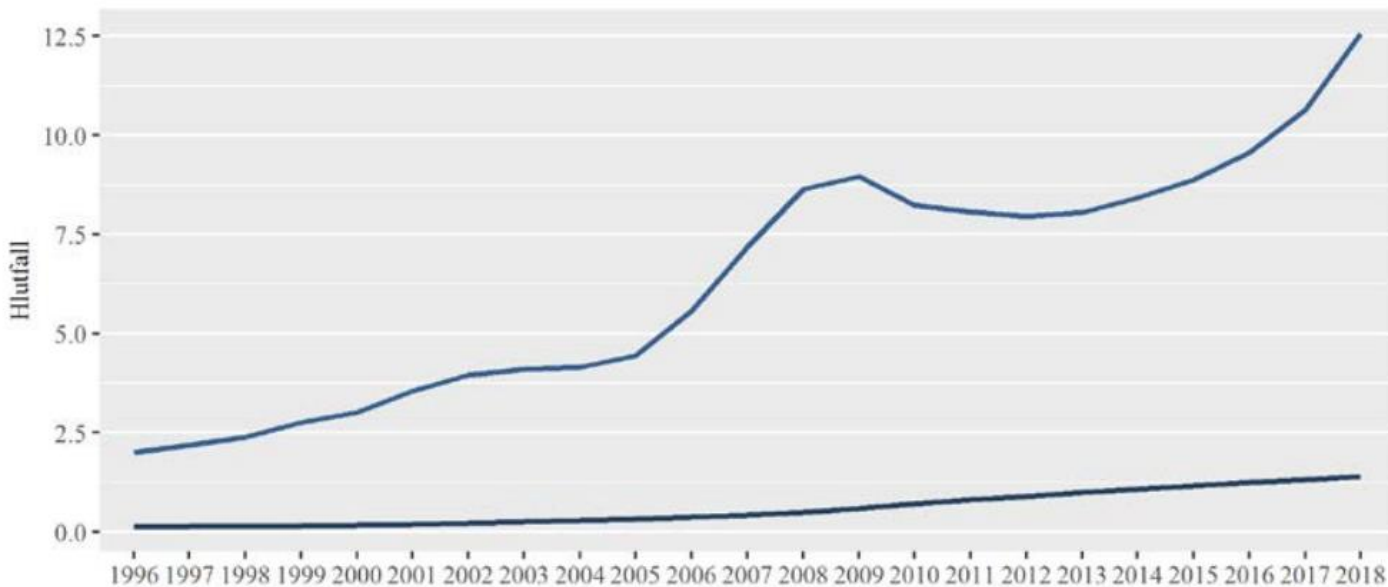
Víddir félagslegar velferðar



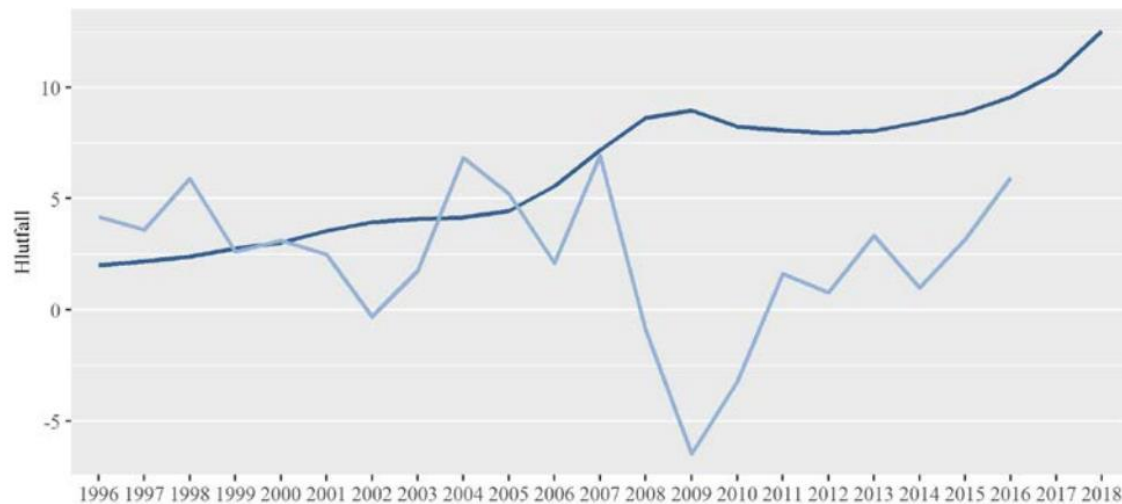
Hugtök

- Innflytjandi - einstakling sem er fæddur erlendis, á foreldra sem báðir eru fæddir erlendis auk þess að eiga afa og ömmur sem öll eru fædd erlendis.
- Önnur kynslóð innflytjenda - er einstaklingur sem fæddur á Íslandi en á foreldra sem báðir eru fæddir erlendis, auk þess sem afar og ömmur eru fæddir erlendis. Barn innflytjanda sem ekki fæðist hér á landi
- Innlendir - einstaklingar með engan erlendan bakgrunn, einstaklingar með engan erlendan bakgrunn sem eru fæddir erlendis, einstaklingar sem eru fæddir á Íslandi og annað foreldri er erlent, og einstaklingar sem eru fæddir erlendis, eiga foreldra sem fæddir eru erlendis en a.m.k. eina ömmu eða afa sem fædd/ur er á Íslandi.

Hlutfall innflytjenda af mannfjölda á Íslandi 1996-2018

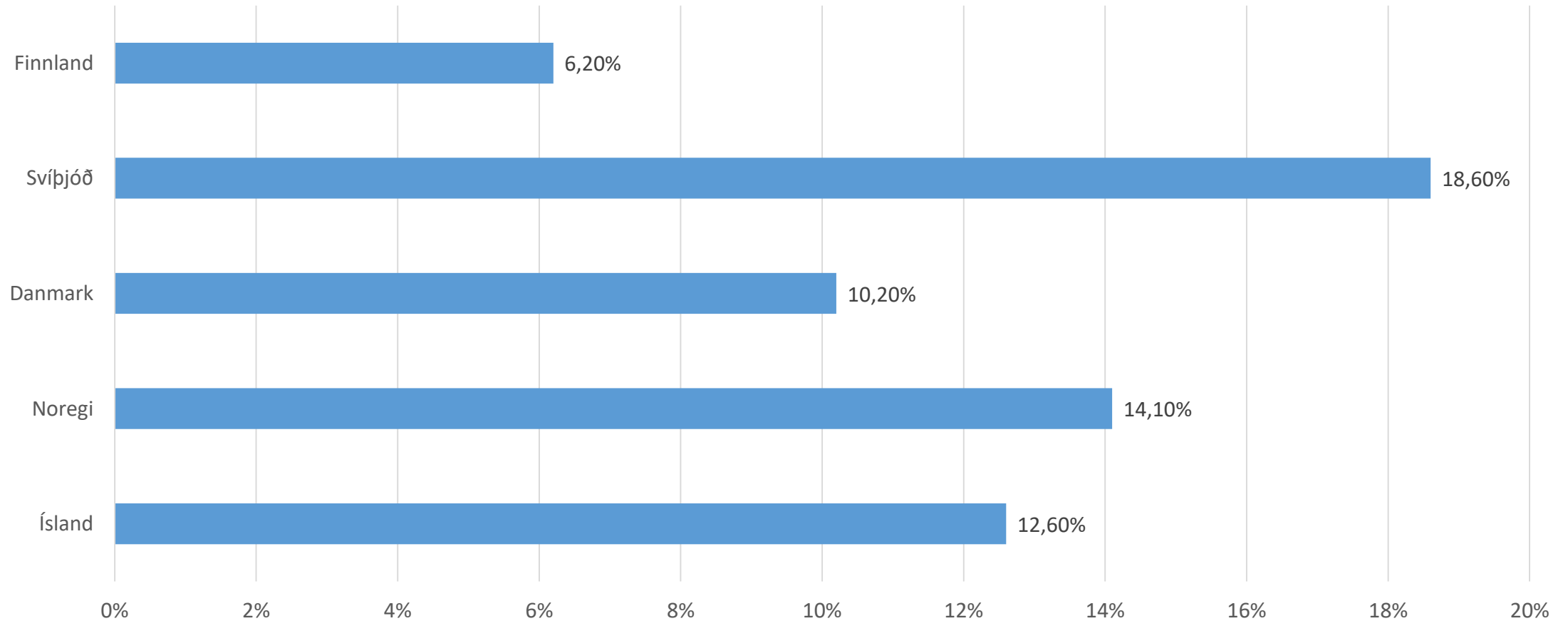


— Innflytjendur — Önnur kynslóð innflytjenda

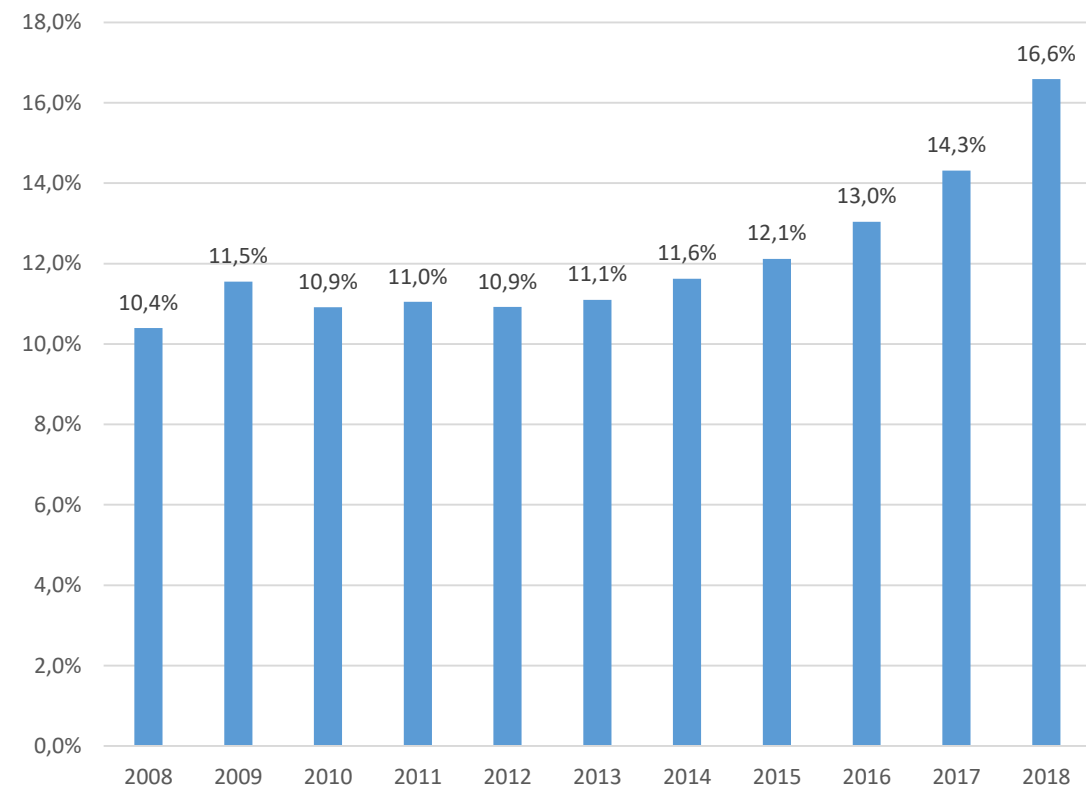
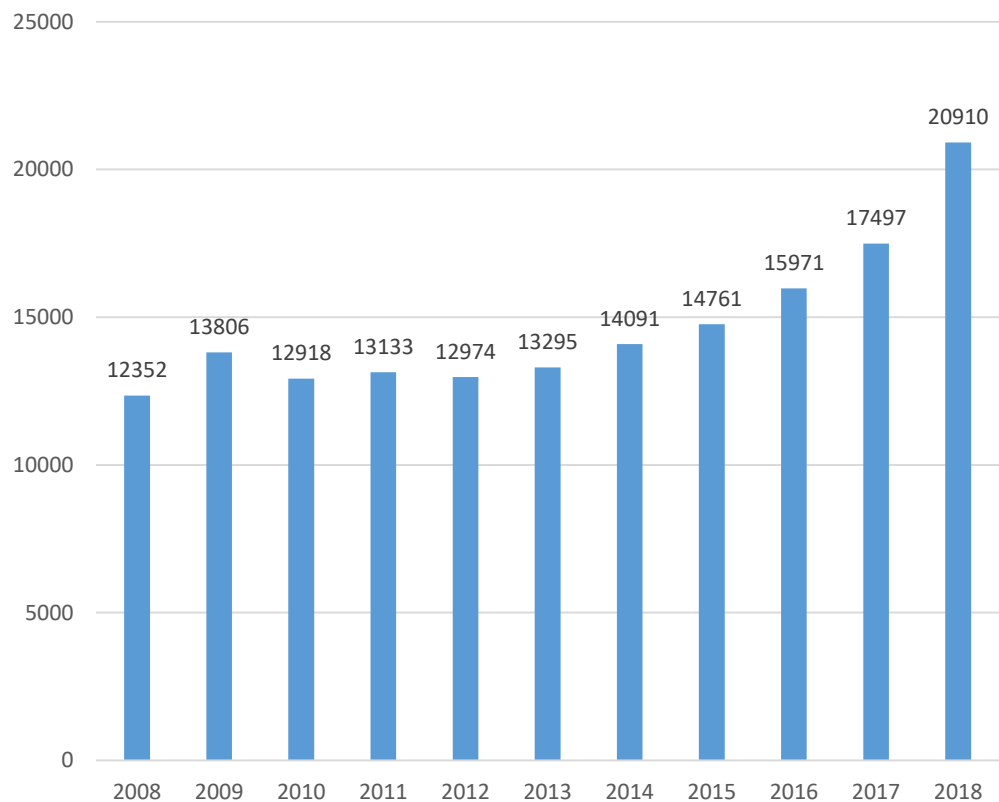


— Innflytjendur af mannfjölda — VLF á mann

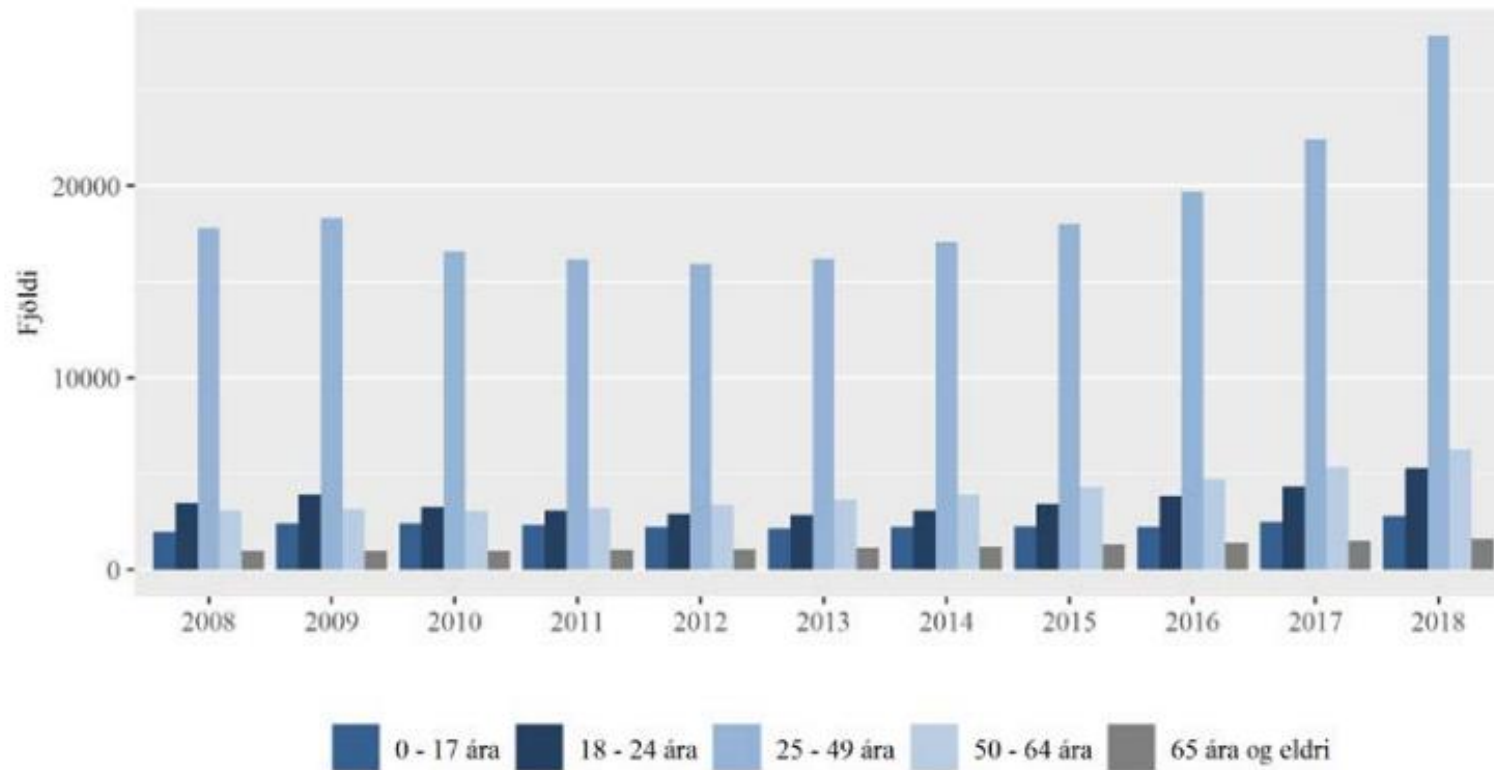
Hlutfall innflytjenda af mannfjölda í Norðurlöndum 2017



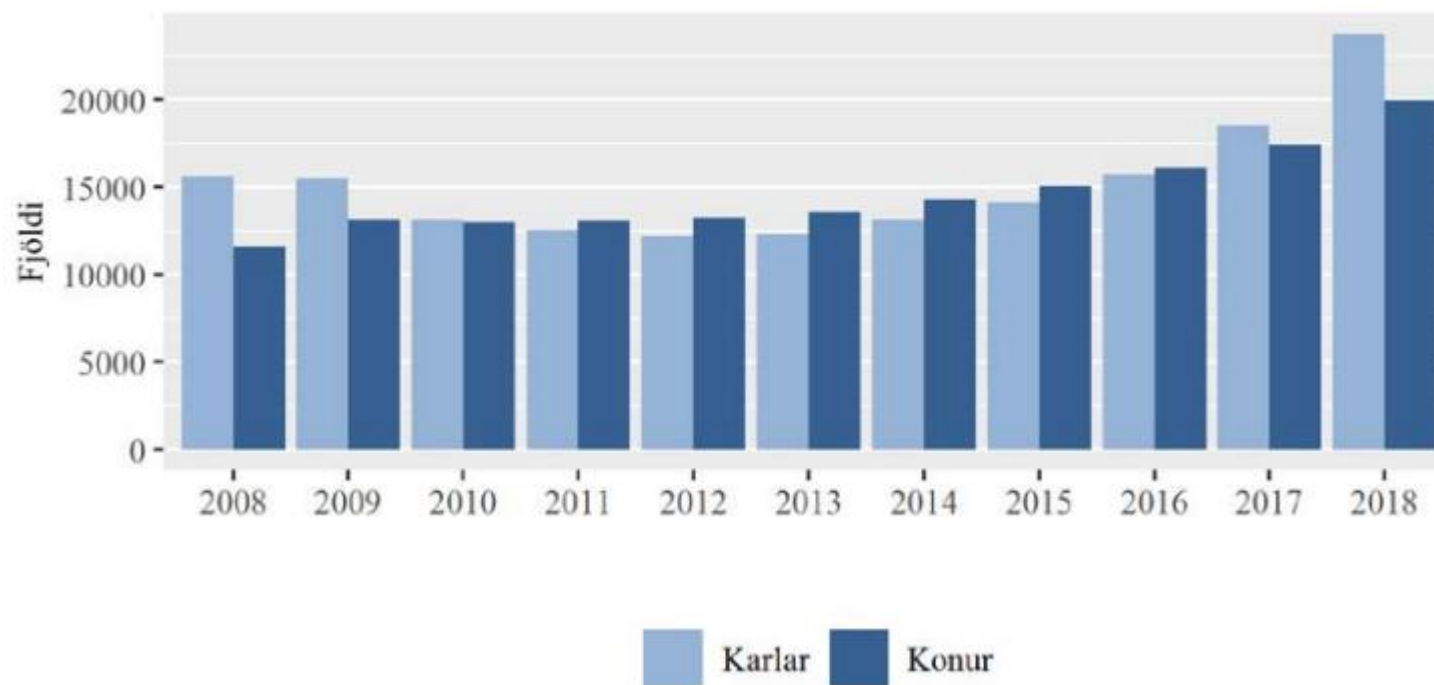
Innflytjendur í Reykjavík – fjöldi og hlutfall 2008-2018



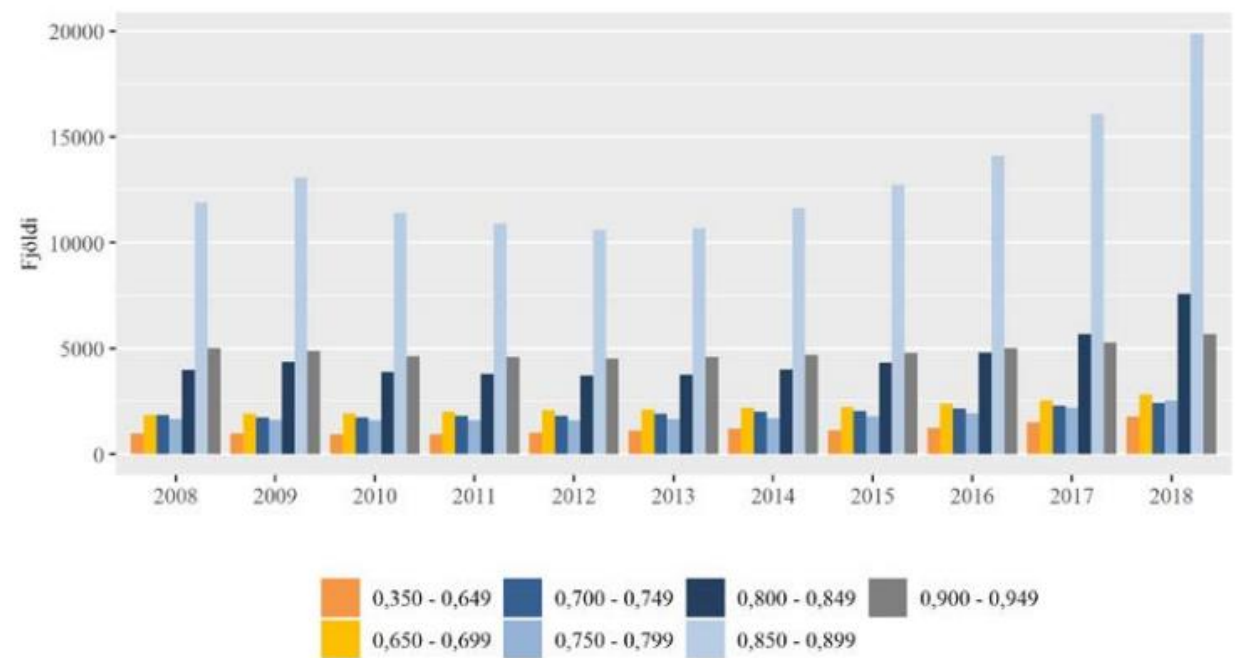
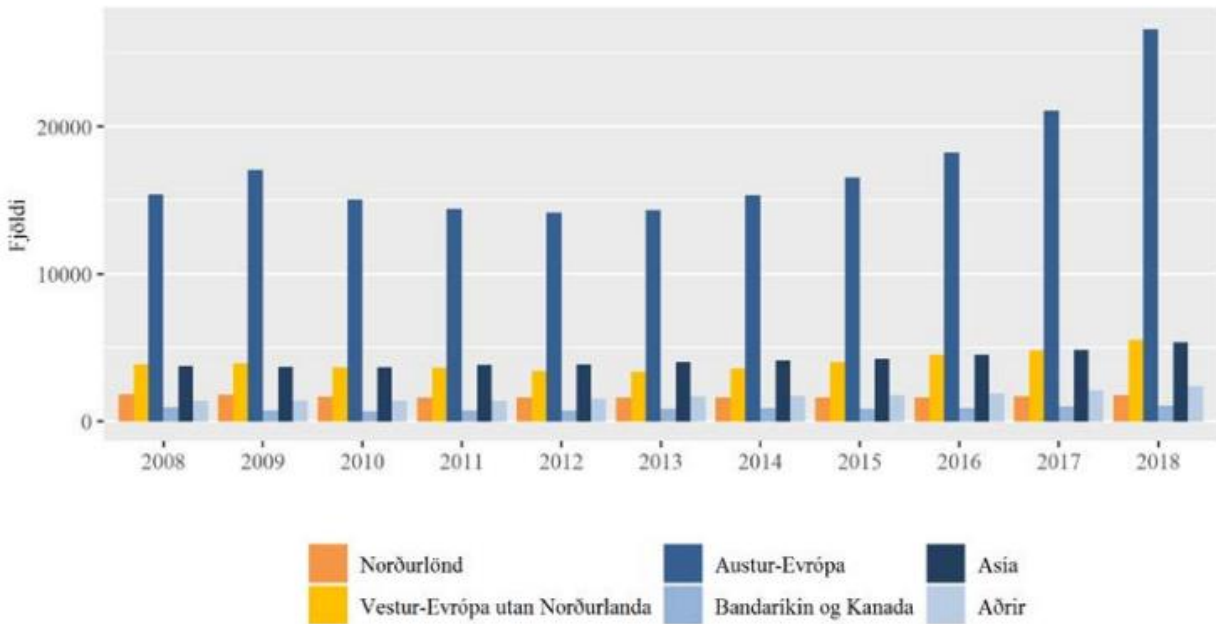
Aldursdreifing innflytjenda á Íslandi (2008-2018)



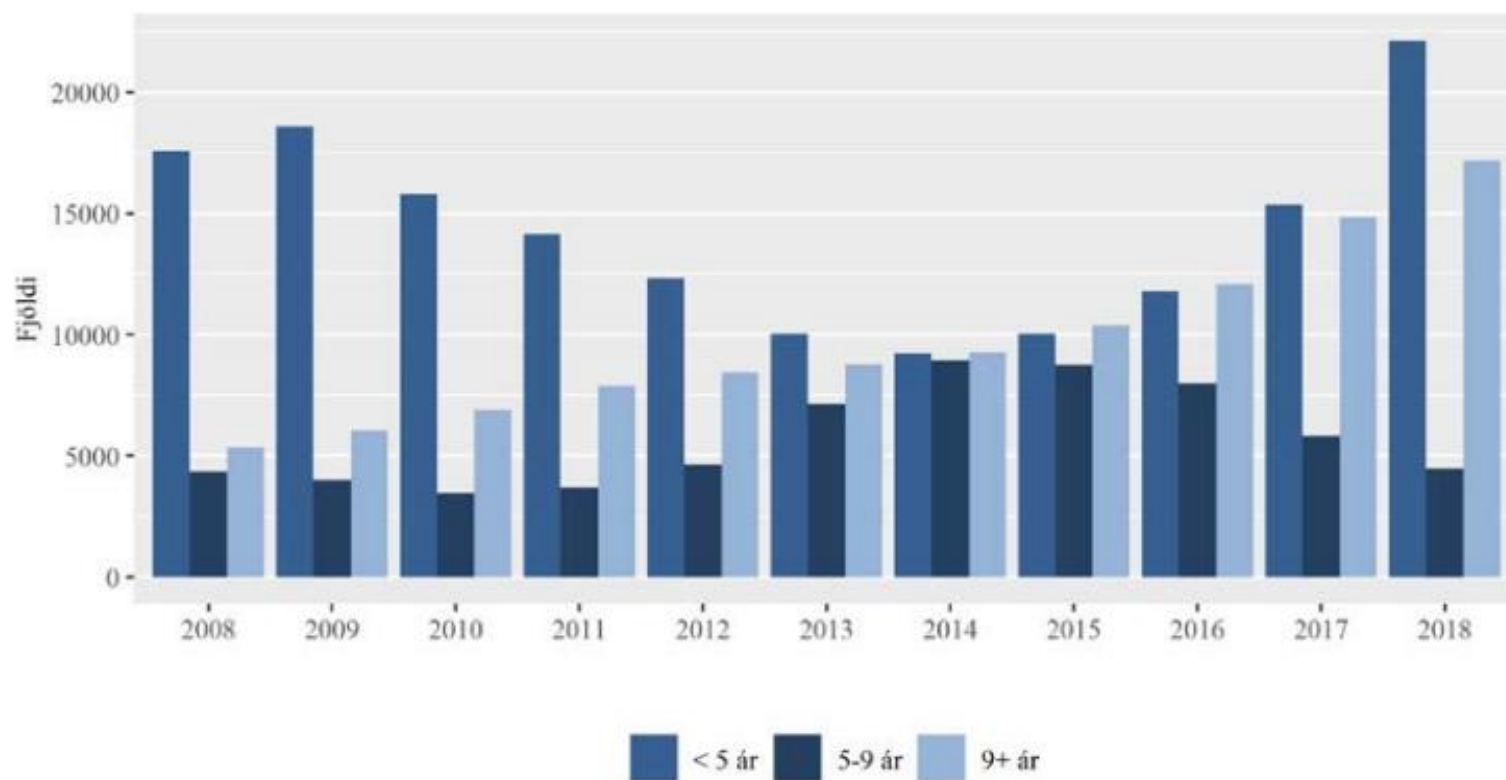
Innflytjendur eftir kyni 2008-2018



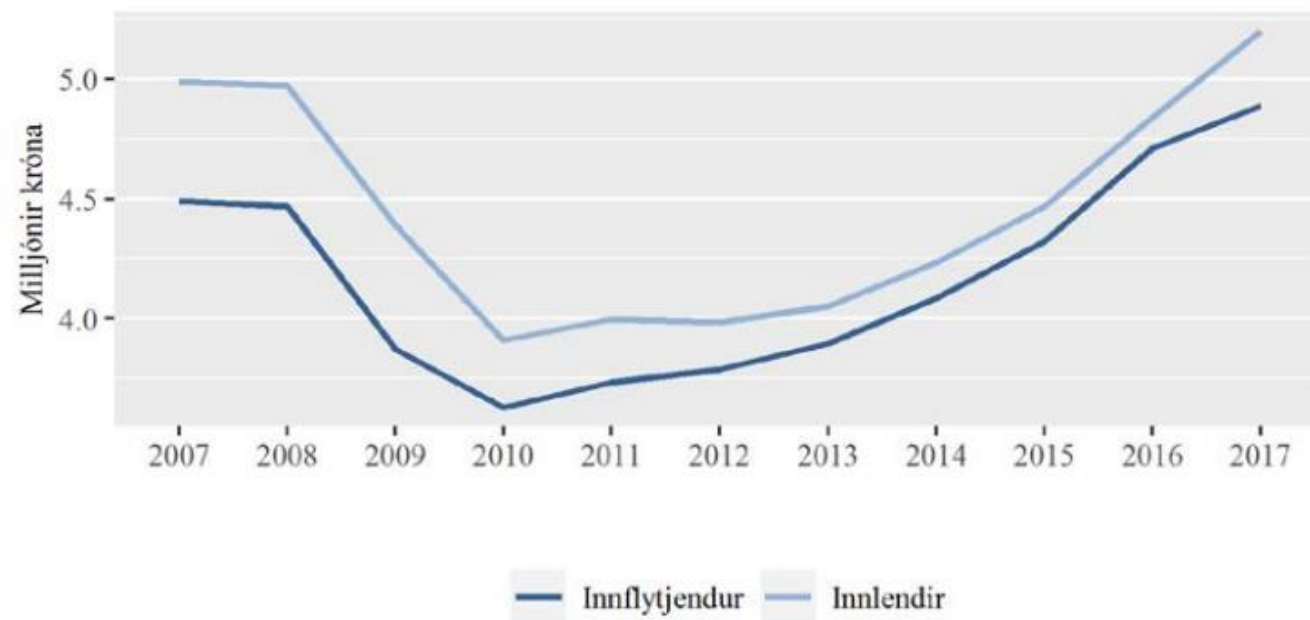
Fjöldi innflytjenda eftir fæðingarsvæði og fæðingarlöndum samkvæmt samtölu heilsu, menntunar og fjárhags 2008-2018



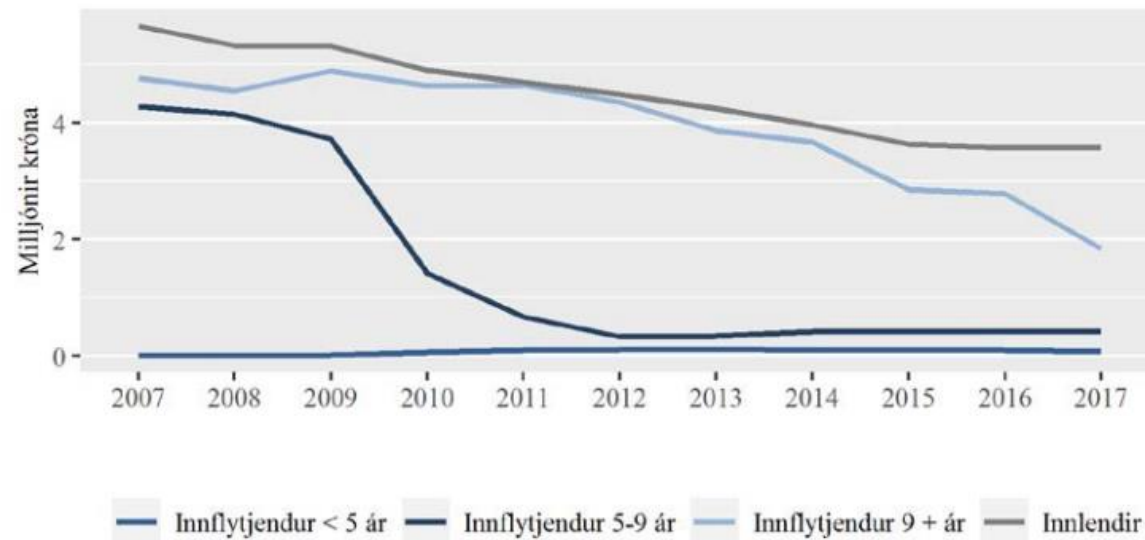
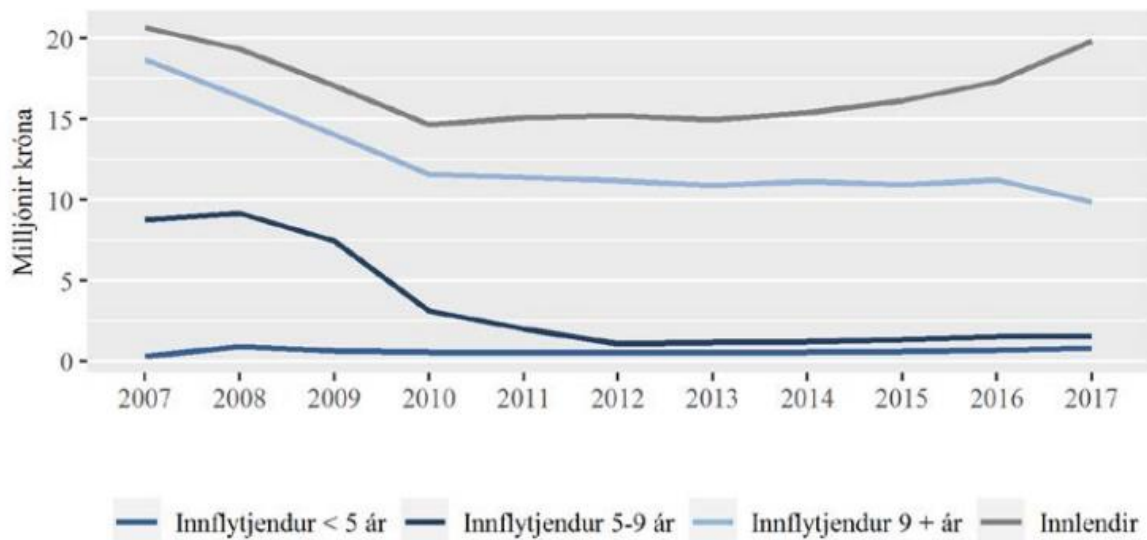
Fjöldi innflytjenda eftir lengd dvalar 2008-2018



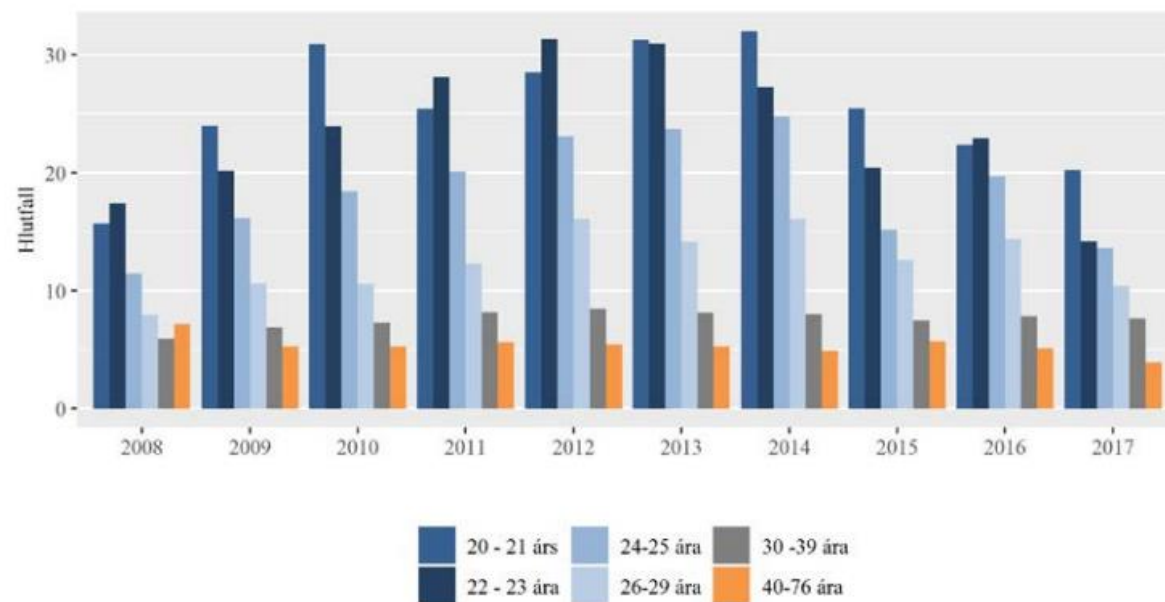
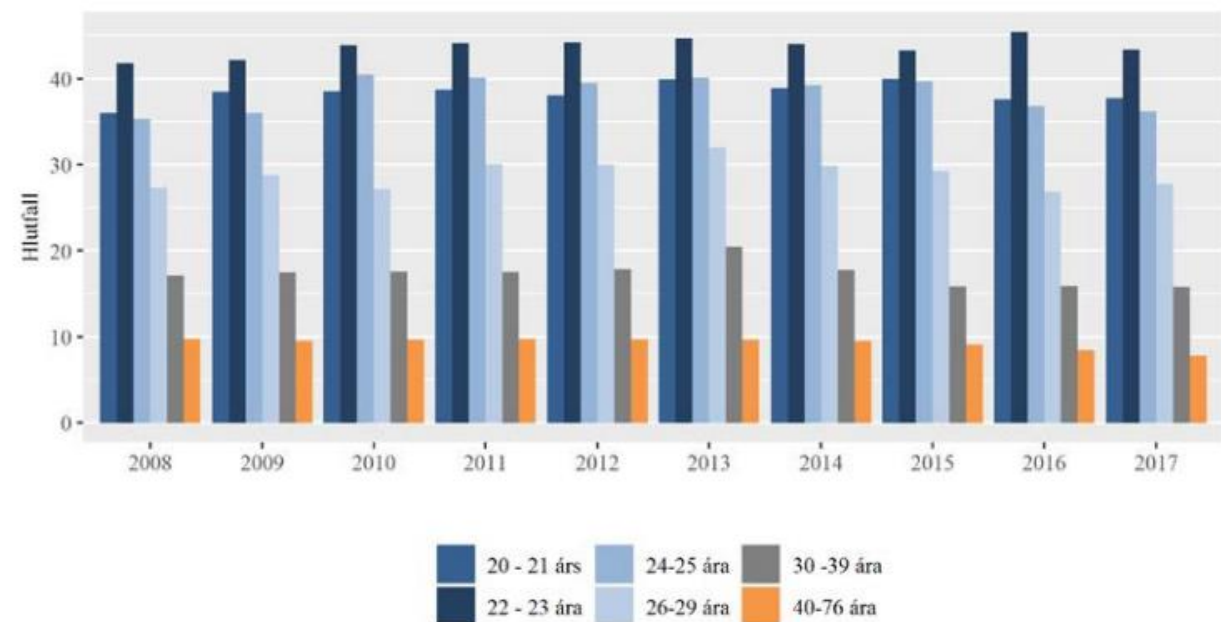
Fjárhagur – heildartekjur



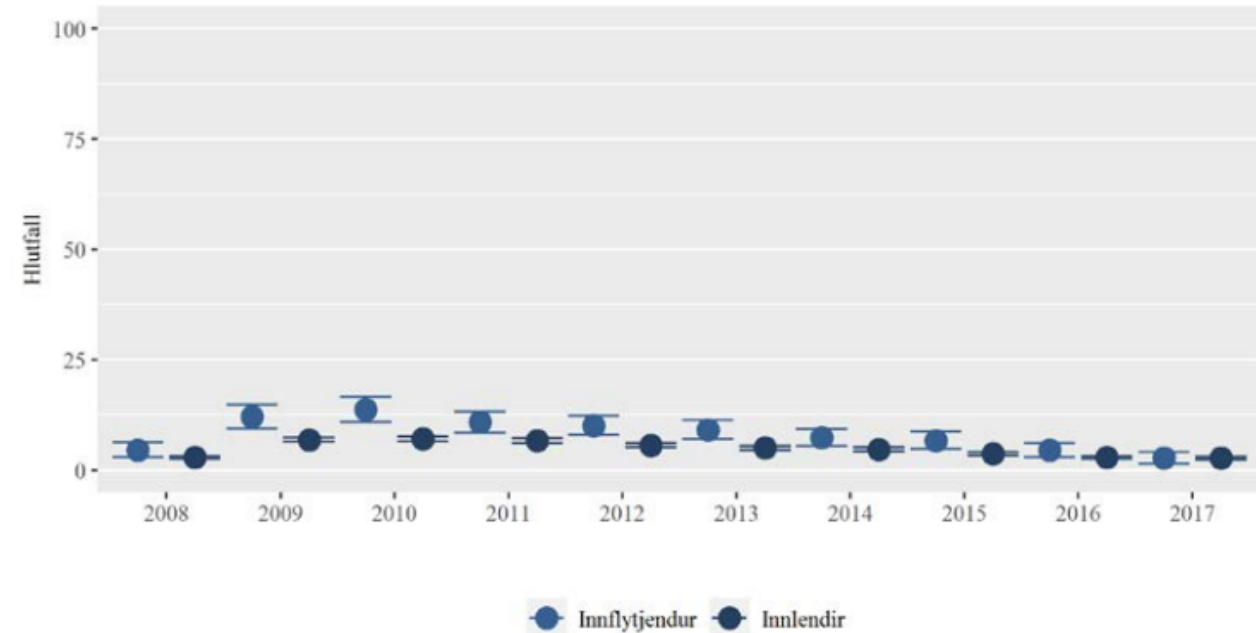
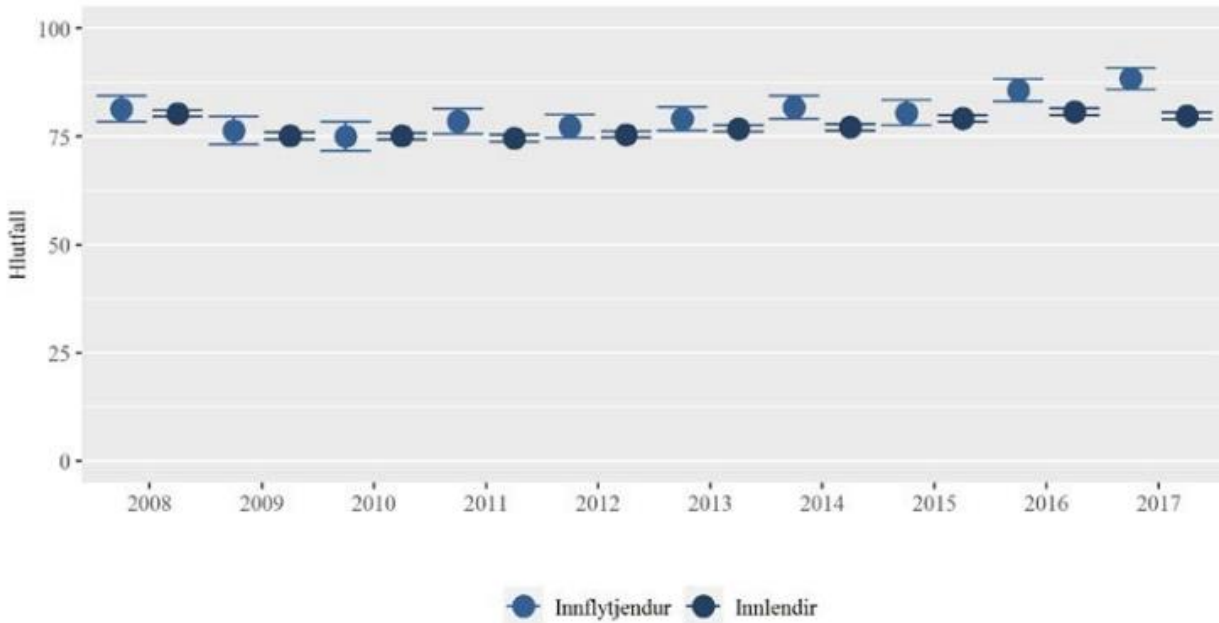
Fjárhagur – eignir og skuldir



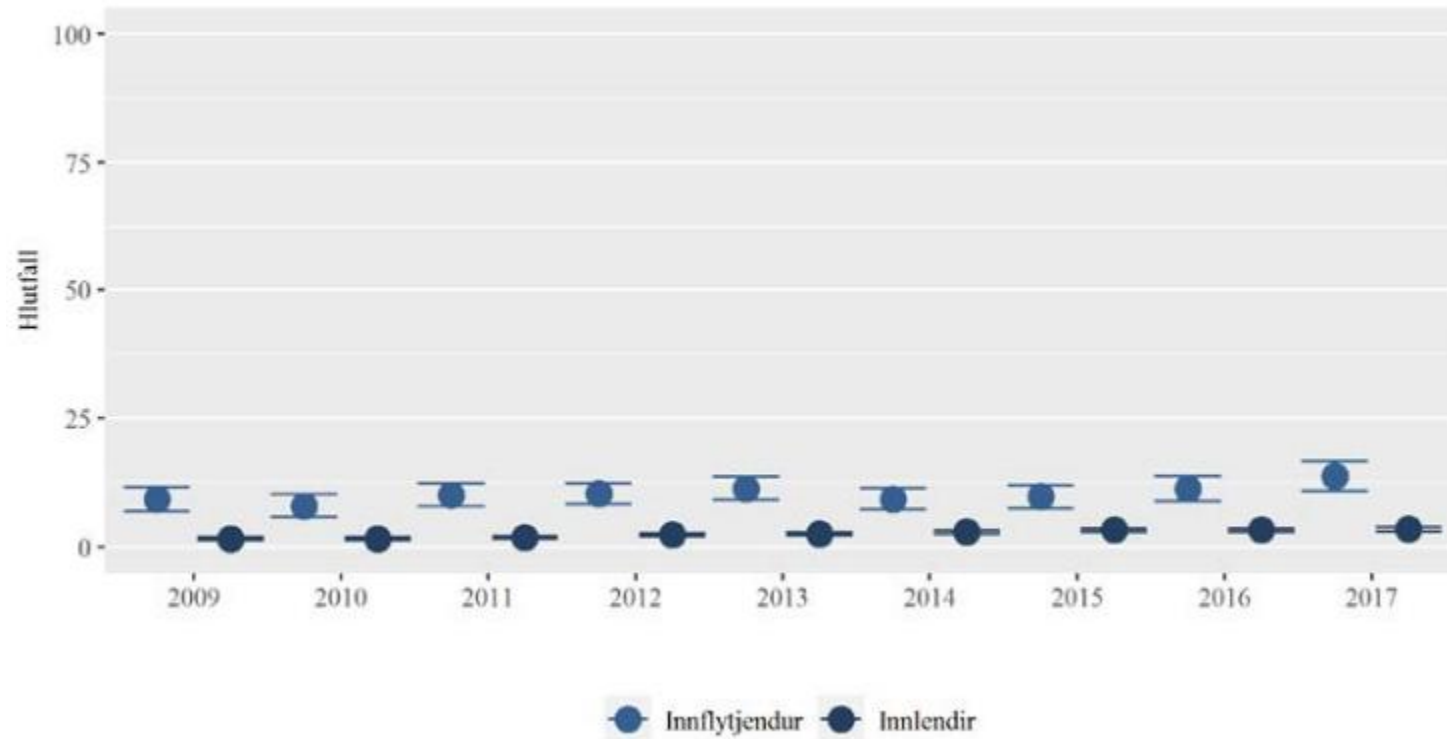
Menntun - framhaldskólar



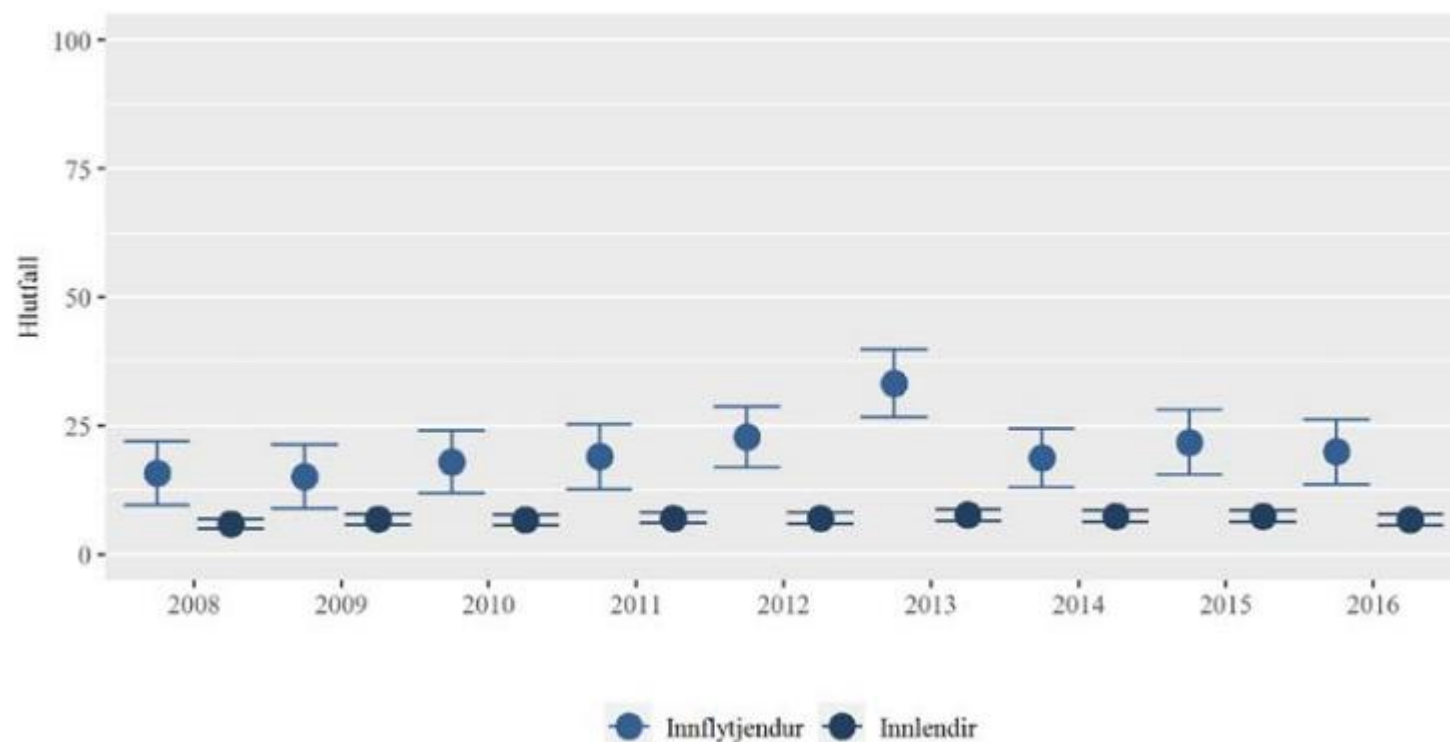
Atvinna og atvinnuleysi (2008-2017)



Ofmenntun



Húsnæði



- Algengara er að innflytjendur séu á leigumarkaði en innlendir
- fleiri innflytjendur sem búa þröngt en innlendir

Lýðræði - stéttafélagsaðild

