

VATNSSTÍGUR HÖNNUN GÖTURÝMIS

FEBRÚAR 2024

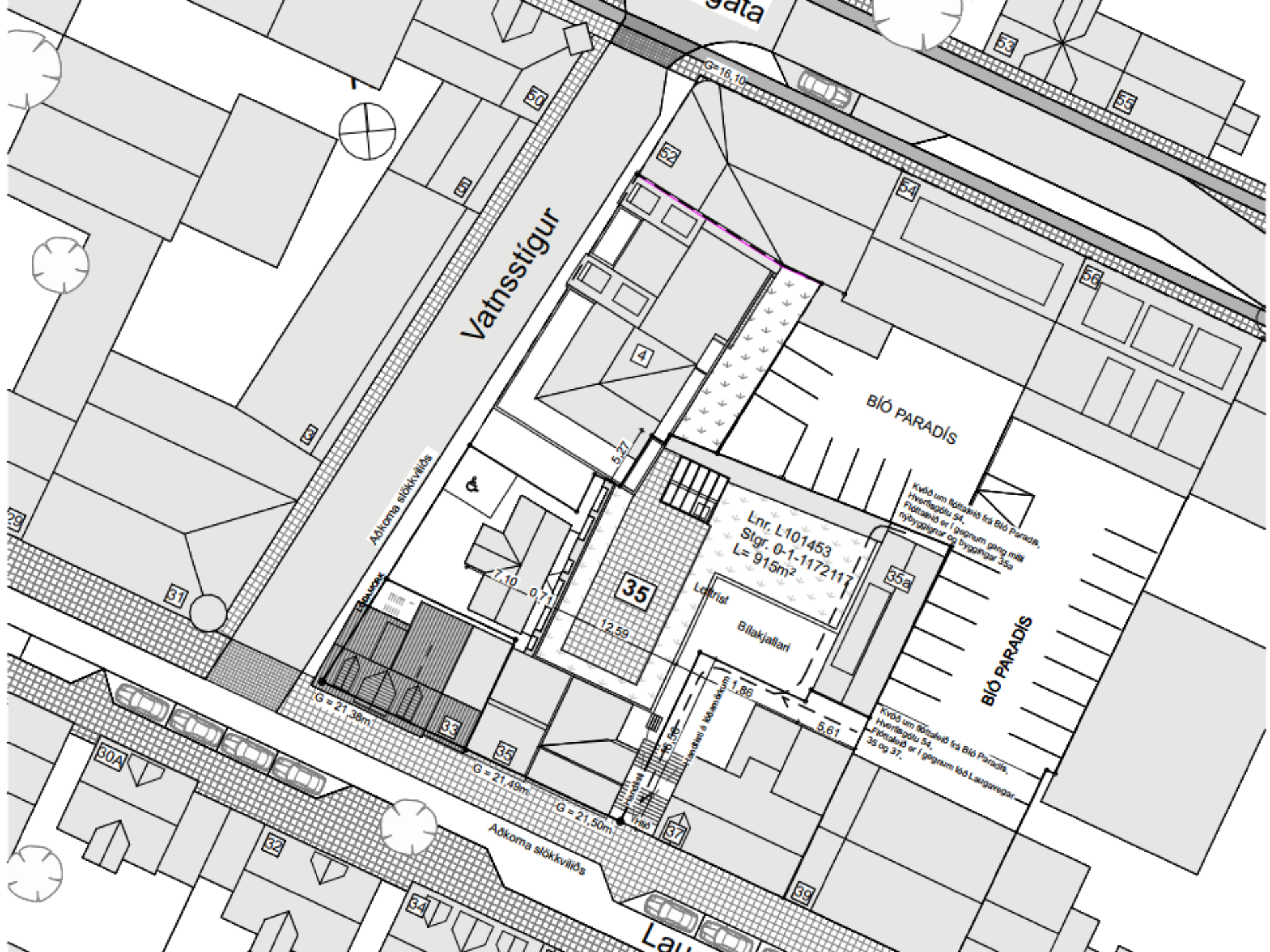




VATNSSTÍGUR

HVERFISGATA

LAUGARVEGUR



Vatnsstigur

Gata

BIÓ PARADÍS

BIÓ PARADÍS

G = 16,10

G = 21,38m

G = 21,49m

G = 21,50m

Lnr. L101453
Slgr. 0-1-1172117
L = 915m²

Kvæð um flötaleið frá BIÓ Paradís,
Hverfisgötu 54,
Flötaleið er í gegnum gang milli
nýbyggðrar og byggingar 35a

Kvæð um flötaleið frá BIÓ Paradís,
Hverfisgötu 54,
Flötaleið er í gegnum lóð Laugavegar,
35 og 37.

Löftrist
Bítakjallari

Adkoma slökkviliðs

Stöðvegur

Handgöngu- og íbúðarstíkur

Vindur

4

5,27

7,10

0,71

12,59

1,86

5,61

31

32

33

34

35

35a

35

35a

37

39

30A

32

34

53

55

56

Lau



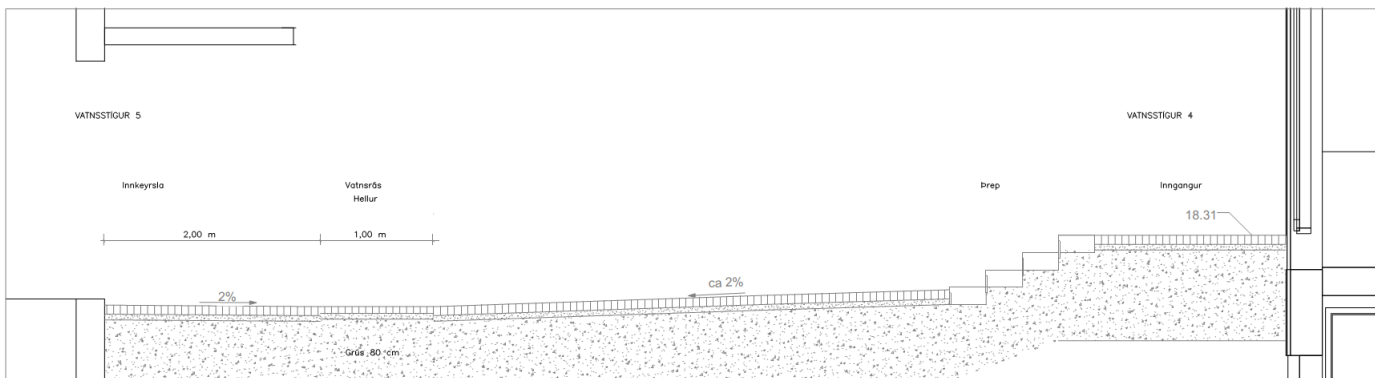
VATNSSTÍGUR
YFIRBORÐSFRÁGANUR
Pálmynd

| | |
|-------------------------|----------------|
| KVARÐI: 1:100 | TEKN NR: F-101 |
| DAGI: 13.02.2024 | HAUNAD: FK |
| FLÓKKUR: 0000-REYKIC | TEKNAÐ: HSG |
| SÍMA: 23217-Vatnsstígur | VERKNI: 23217 |

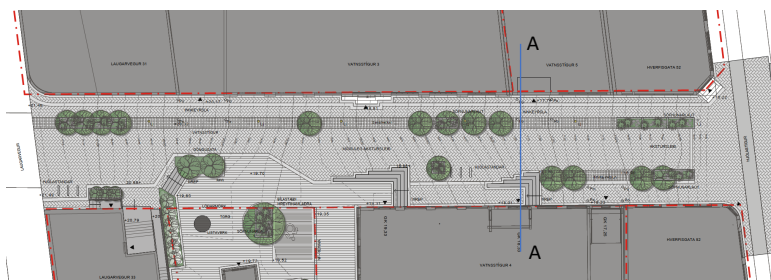








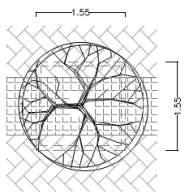
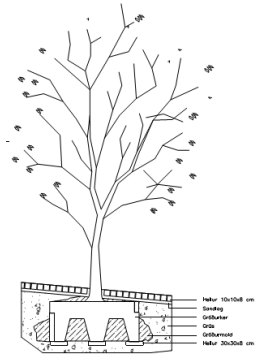
SNID A-A



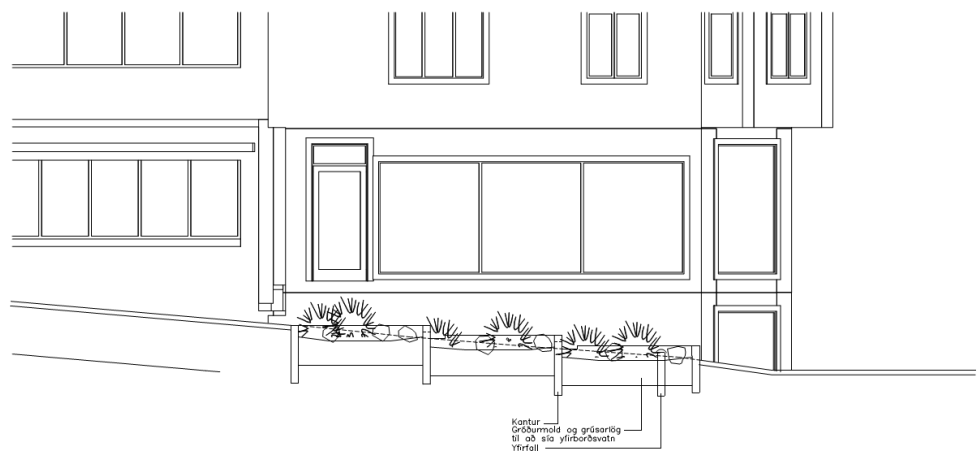
PLANMYND

| | | | |
|--------------------------|----------|-------|--|
| VATNSSTIGUR | | | |
| YIRBORDSFRAGANGUR | | | |
| Þversnið Vatnsstigur 4-5 | | | |
| KVAMM-A1: 1:100 | TEKN NR: | F-104 | |
| DAGS: 13.02.2024 | HAHNAD: | FR | |
| FLUKJUR: 0000-ppA/C | TEKNAD: | HSG | |
| SKRÁ: 23217-Vatnsstigur | VERNRN: | 23217 | |





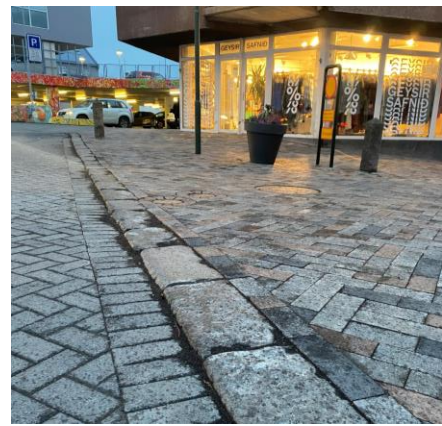
Frágangur við götutré

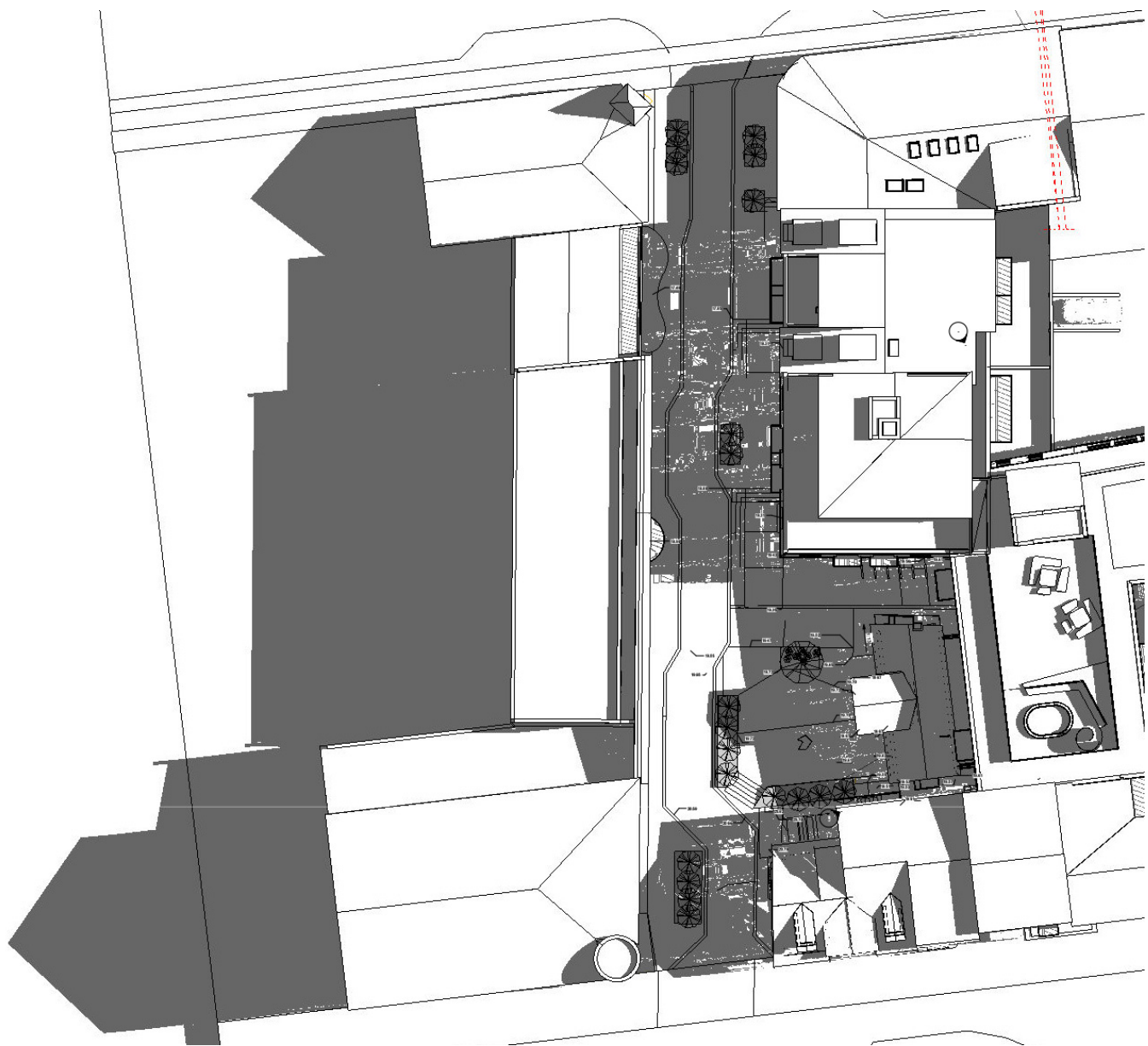


Frágangur við sófunarlaut

| | | | |
|--------------------|------------------|------------|-------|
| VATNSSTIGUR | | | |
| YFIRBORÐSFRÁGANGUR | | | |
| Sérhlutur | | | |
| SWHREI-A1: | 1-40 | TEKNI NR.: | F-105 |
| DAKS: | 13.02.2024 | HANNAÐ: | PK |
| FLOKKUR: | 0000-reyk\C | TEKNIÐ: | HSG |
| SKRÁ: | 23217-Vatnstigur | VERKNR.: | 23217 |



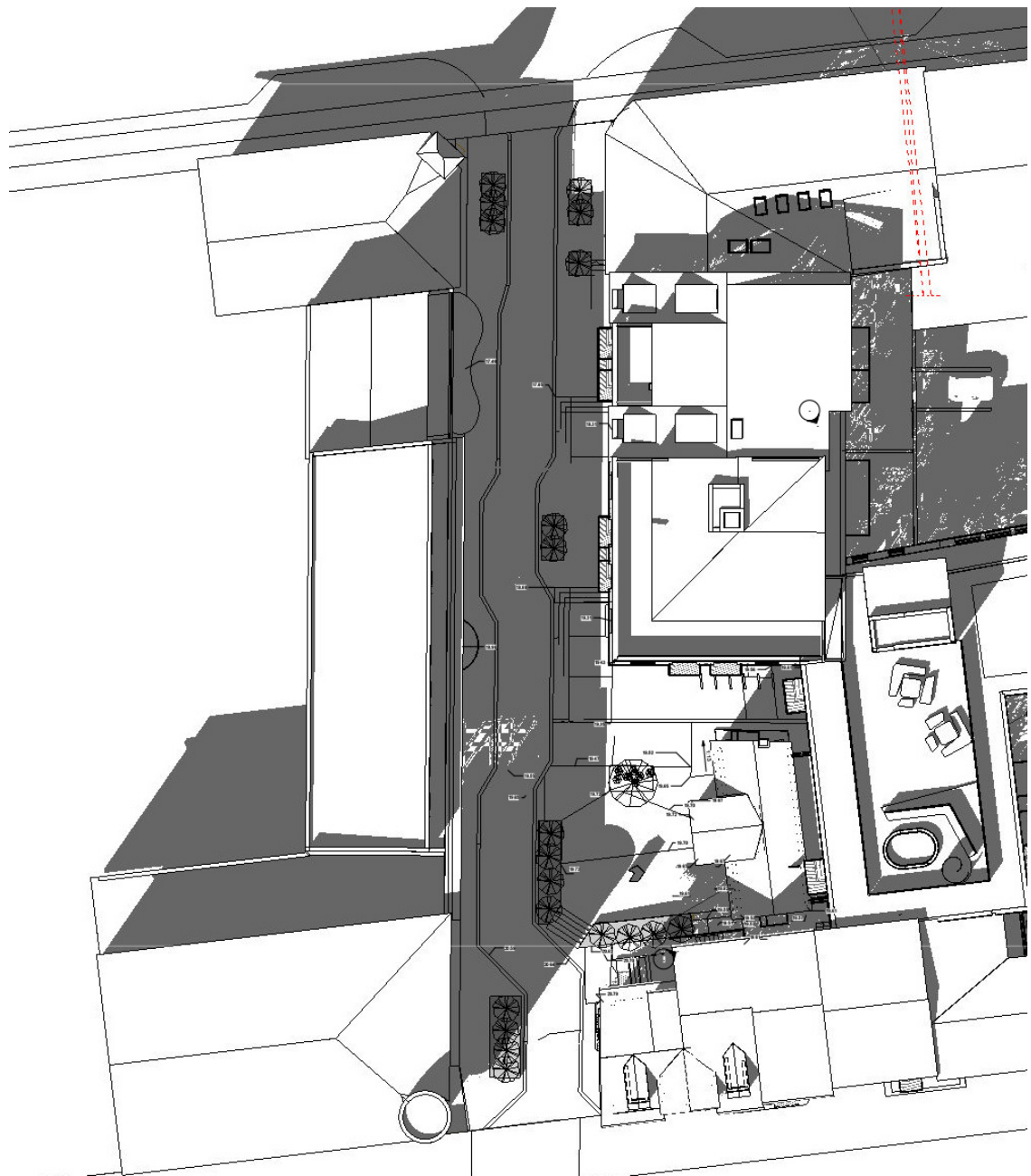




17.Júní kl.10:00



17.Júní kl.14:00



17.Júní kl.14:00